



Stratton Parish News

AUTUMN 2022 - ISSUE 003

Serving the Community

In This Issue..



A Tribute to Queen Elizabeth II
Page 2



Upcoming Parish Events
Page 18



Her Majesty Queen Elizabeth II



“It is with a heavy heart to hear of the death of Her Majesty Queen Elizabeth II. Our thoughts are with the Royal Family at this very difficult time. Her Majesty has been a major part of all our lives. She will be remembered as a selfless dedicated servant, committed to serving this country. On behalf of Stratton St Margaret Parish Council and its residents I wish to convey our deepest and heartfelt

– Chairman Robert Jandy

The Parish Council together with all of our residents wish to express our thoughts and condolences to King Charles III and members of the Royal Family.

Meet Your Council



Lower Stratton Ward

Cllr Anne Brooker
e: cllrannebrooker@strattonst
margaret.gov.uk



Lower Stratton Ward

Cllr Laura Butcher
e: clllaurabutcher@strattonst
margaret.gov.uk



Lower Stratton Ward

Cllr Tom Butcher
e: cllrtombutcher@strattonst
margaret.gov.uk



Lower Stratton Ward

Cllr Glenn Castle
e: cllrglenncastle@strattonst
margaret.gov.uk



Merton Ward

Cllr Claire Crilly
e: cllrclairecrilly@strattonstmar
garet.gov.uk



Upper Stratton Ward

Cllr Alison Foley
e: cllralisonfoley@strattonstmar
garet.gov.uk



Upper Stratton Ward

Cllr Oladapo Ibitoye
e: cllroladapoibitoye@strattonst
margaret.gov.uk



Coleview Ward

Cllr Barrie Jennings
e: cllrbarriejennings@strattonst
margaret.gov.uk



Lower Coleview Ward

Cllr Pratap Mane
e: cllrpratapmane@strattonst
margaret.gov.uk



Upper Stratton Ward

Cllr Andree Murphy
e: cllrandreemurphy@strattonst
margaret.gov.uk



Upper Stratton Ward

Cllr Tara Page
e: cllrtarapage@strattonstmar
garet.gov.uk



Upper Stratton Ward

Cllr Teresa Page
e: cllrteresapage@strattonst
margaret.gov.uk



Coleview Ward

Vice Chairman Tim Page
e: cllrtimpage@strattonst
margaret.gov.uk



Lower Stratton Ward

Cllr Roger Smith
e: cllrrogersmith@strattonst
margaret.gov.uk



Upper Stratton Ward

Cllr Joe Tray
e: cllrjoetry@strattonstmarga
ret.gov.uk



Coleview Ward

Cllr Matthew Vallender
e: cllrmatthewvallender@strattonst
margaret.gov.uk



Lower Coleview Ward

Cllr Ravi Venkatesh
e: cllrravivenkatesh@strattonst
margaret.gov.uk

Local Councilors are elected by the community to decide how the council should carry out its various activities. They represent public interest as well as individuals living within the ward in which he or she has been elected.

PROPERTY

Beechcroft Library

Beechcroft Library in Upper Stratton is receiving a huge investment over the next year. The council agreed to install a lift in the building to help improve accessibility to the activity room on the first floor (read more about this on page 20).

Future potential developments are in discussions to further grow and improve our local library & community hub.



Dorcan Sports Pavilion Demolition

SSMPC council has now agreed to go ahead with the demolition of Dorcan Pavilion. Planning applications have been submitted and works are underway to cut off the existing water supply ready for demolition to commence. The Open Spaces Officer is in contact with the contractor who will be completing the works and they are ready to commence the demolition as soon as the supply cut off is complete.

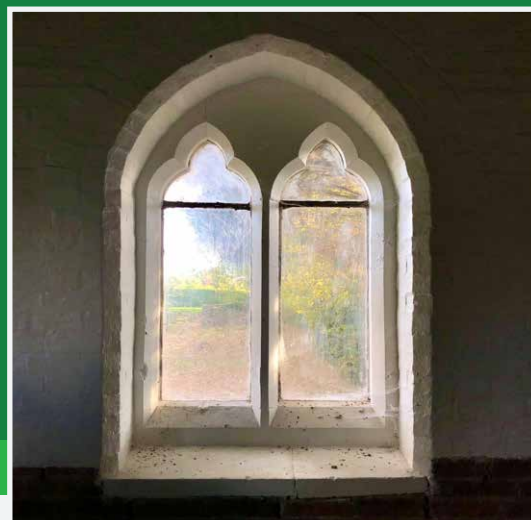
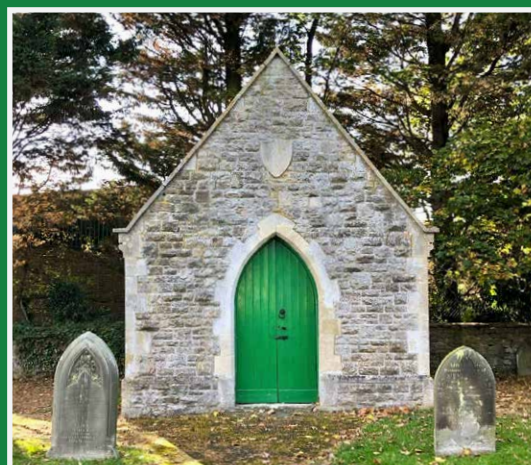


Green Road Chapel Restoration Project

After discussions to decide what work needs to be done the proposed works were taken to a Full Council meeting. It was resolved that Cllr Tom Butcher would volunteer his free time to replace the "thought to be original" wooden floor with a like for like replacement. The current floor is broken in a number of places, and needs replacing before the building can be used again.

The Governance Administrator is currently in talks with Steven Roe from the local Methodist Church about what events will be held once the chapel has been finished. It was mentioned to go into partnership with the Salvation Army to exhibit some art work that homeless individuals around the parish have made and possibly sell to raise money (all proceeds to go to The Salvation Army).

Our Governance Administrator has also been in touch with a local stained glass window company who are on board to install some temporary stained glass windows to the chapel once the renovations are complete.





FINANCE

Did you know the Parish receives funding called Section 106 and CIL and this funds a lot of improvements to your local neighbourhood!

The Community Infrastructure Levy (CIL) is a charge that local authorities can set on new development in order to raise funds to help fund the infrastructure, facilities and services - such as schools or transport improvements - needed to support new homes and businesses.

Section 106 funding is paid by developers and is used on community infrastructure projects. Funding differs from area to area and can only be used on capital projects.

Here are some projects that are currently underway or planned within Stratton St Margaret Parish for this financial year.

Description	Current balance	Project	Spend
C157Arts & Culture	£4,414.31		
N865 Arts & Culture	£1,110.46		
N866 Library	£7,558.66		
CIL 2021/22	£9,862.86	Improve footpath at Meadowcroft	£9,862.86
CIL 2018/19	£12,212.44	Improve footpath at Meadowcroft	£12,212.44
CIL 2019/20	£9,586.85	Improve footpath at Meadowcroft	£9,586.85
CIL 2020/21	£25,460.69	Improve footpath at Meadowcroft	£14,664.69
		Delamere Drive Play Area 2023	£10,796.00
S106 Community	£15,442.07	Improve footpath at Meadowcroft	£15,442.07
S106 Offsite	£11,231.09	Improve footpath at Meadowcroft	£11,231.09
S106 Play area	£32,263.28	Upgrade Meadowcroft	£1,207.00
		Meadowcroft Climbing Area	£29,307.64
		Meadowcroft Play Area	£1,748.64
S106 Sports Pitches	£104,089.85	Skate Park	£32,219.85
		Car Park Extension	£71,870.00
S106 Outdoor Sports	£8,098.40	Delamere Drive Play Area 2023	£8,098.40
S106 Formal Play Facilities	£8,934.64	Greenbridge Play area	£8,934.64
S106 Local Open Space	£11,835.10	Greenbridge Play area	£11,299.36
		Delamere Drive Play Area 2023	£535.74
	<u>£262,100.70</u>		<u>£249,017.27</u>

PLANNING & HIGHWAYS

Although not a decision-making body, this committee meets regularly, once a month, to look at planning applications within Stratton Parish and comment on developments in our neighbouring parishes.

Parishioners are always welcome to attend and air their views and to observe our workings. The committee can 'call-in' to the Borough Council those plans it believes to be contentious. Committee members are kept informed concerning road works as it affects, or might affect, our local roads.

In 2019 the planning committee introduced a neighbourhood plan

under the Localism Act 2011.

The aim of this plan is to give communities the right to shape and develop their areas. The Stratton St Margaret neighbourhood plan has been prepared by residents and led by Stratton St Margaret Parish Council and shaped by various surveys and public consultations to accurately reflect the needs and wants of the community.



OPEN SPACES

An Introduction to our Open Spaces Management

Our Open Spaces Management team have been doing what they do for decades and we think their experience shows. It might surprise you how busy and complicated public land management can be, so please read on to get a taste of it.

- We have 10 people in our department and an arsenal of equipment to aid us in our work which includes 1 large & 1 small tractor, 4 ride on mowers and a mini digger.
- We have around 160 acres of land to manage, split into over 100 land parcels, ranging from large to small.
- We mow all of our grass every 3 weeks from end of March to end of October. Some priority areas are done fortnightly.
- We have around 2 miles of hedges that are trimmed 1-3 times a year depending on priority.
- We spend around £15,000 annually maintaining trees.
- We spend around £75,000 a year clearing rubbish and emptying our 137 bins.
- We have 2 active cemeteries and we provide a burial service every 4.8 days on average.
- We have 2 allotment sites and 151 registered tenants.
- We have 10 children's play areas and 4 basketball/mini football courts. We spend around 1,100 hours each year managing and maintaining them at an annual cost of around £17,000. This excludes any improvement projects.
- We have created and now actively manage around 5 acres of wild flower meadows.
- We usually plant around 500 trees every year.
- We provide flowers in many flower beds and planters around the parish.
- We help residents with their wide ranging land management queries and often have to take action to encourage private land owners to improve the maintenance of their own land.
- We always investigate every single enquiry we receive and will always reply to residents. We welcome your feedback. Oliver Saunders, our Open Spaces Officer, will happily speak with you.



Meet our Open Spaces Team



Stratton St Margaret's Grounds Team

Autumn is a time for laying your garden to rest ready for winter, but it is also a time for beginning to prepare for next year. This is the perfect time to consider wildlife that will need a little extra help through the cold months.

Autumn Gardening Top Tips!

- Remove any weeds from flower beds or patio areas to prevent seeds forming. This will leave your garden tidy until spring time.
- Give your lawn one final cut and consider planting early flowering bulbs such as Crocus's into it.
- Collect any apples and store them in a cool dark place. The parish council has provided several community orchards throughout its land in recent years. Please help yourself to any



- Mulch flower beds with rotten wood chip, manure or compost from your heap and leave to rot into the soil over winter.
- Plant garlic and onions into your vegetable patch. Spinach, Coriander, Brassicas and Broad Beans can also be planted. It's time to start thinking about soft fruits and any trees you might want to plant.
- Clean down and put the barbeque back in the garage and get out the fire pit.



OPEN SPACES cont.

We have just added more play equipment to our play area at Greenbridge Recreation ground. A basket swing, dish roundabout and toddler springers give improvements for all younger age groups and allows access to a variety of physical abilities.



Due to the drought we dramatically reduced our annual mowing regime savings us hours of work and around £2,000 in fuel costs. We used the time to carry out many small improvement projects such as repairing signage, fencing and benches and cleaning pavements.



We took delivery of our second electric vehicle recently. Our play area inspector / buildings caretaker drives this. We now have a fleet of 5 vans.

We have around 5 acres of wild flower meadows that we have created. We plan to add another acre this winter across 4 sites and will be harrowing and reseed-ing these areas to add species richness. All areas have recently been cut with our hay-cut and collect mower.



Allotments



In Stratton we have 2 allotment sites available to rent for those living within the parish (St Phillips & White Hart).

We have waiting lists for both of our sites as they are in high demand. White Hart is approximately a 1-2 year wait, however our St. Phillips site is only around a 6 month wait. If you would like to be added to either list please contact us at info@strattonstmargaret.gov.uk

At White Hart we have been busy renting out our 14 brand new plots. They have now all been rented out to new tenants.

We now only have one vacant plot between both sites which will be shortly renting out to the next on the waiting list before the winter months.

Our prices have had a 10% increase this year which was agreed at an Open Spaces Meeting (see new pricing below).

Full Plot Our largest plot available	Half Plot Half of a full plot	Quarter Plot Our most popular size	1/8th Plot The smallest plot we currently offer
£ 66 /per year	£ 44 /per year	£ 22 /per year	£ 11 /per year
• 12 metres x 45 metres	• 12 metres x 22 metres	• 6 metres x 22 metres	• 6 metres x 11 metres



Sub Committee

Youth



The Stratton Youth provision has been an absolute hit from the get go, with our hard work & making the new provision loud and clear we have thrived and developed rapidly with an ongoing cohort of keen young people engaging with us weekly over 8 sessions per week. We are proud to say we already have 133 young members and within 3 months we have already had 1149 Attendances which is just incredible!

Music Sessions

Since starting the provision we have had a small group who came to us asking desperately if they can have a space dedicated to all things music and a space where they could develop their own band. We have allowed this to happen and every Thursday we have the band afternoon alongside the open access youth work. Needless to say the noise can be interesting with a bunch of budding rockers.



Our Youth Club Allotment Plot...

We have been super lucky to have our very own allotment and it is coming on really well! From a blank overgrown canvas we now have individual plots ready for sowing next year. Over the summer holidays we had groups of young people come and work on the land with us as an extra activity based session. This happened weekly and was well received! It was a perfect time to introduce new young people to our youth club and also learn together how allotments work.





Lower Stratton • Upper Stratton • Merton • Lower Coleview • Colerivew • MEADOWCROFT COMMUNITY FOR

Stratton Youth

Lower Coleview • Colerivew • MEADOWCROFT COMMUNITY FOR

WANT TO TRY SOME
NEW & EXCITING
ACTIVITIES?

DO YOU NEED
SOMEWHERE
TO CHAT TO A
YOUTH WORKER?

Monday



Tuesday

3:30 - 5:30 PM
YOUTH CLUB (AGES 10-14)
@ MEADOWCROFT CENTRE
5:45 - 8 PM
EVENING STREET SESSION
@ MERTON

3:30 - 5:30 PM
YOUTH CLUB (AGES 10-14)
@ MEADOWCROFT CENTRE
5:45 - 8 PM
EVENING STREET SESSION
@ GRANGE

Wednesday

3:30 - 5:30 PM
YOUTH CLUB (AGES 10-14)
@ MEADOWCROFT CENTRE
5:45 - 8 PM
EVENING STREET SESSION
@ MEADOWCROFT

Thursday

3:30 - 5:30 PM
YOUTH CLUB (AGES 10-14)
@ MEADOWCROFT CENTRE
5:45 - 8 PM
EVENING STREET SESSION
- INTEL BASED



@SSMPCSWINDON



@SSMPCSWINDON

Volunteering

Stratton St Margaret Parish Council have some brilliant volunteering opportunities for you to get involved in. Whether you would like some experience in library work, or would prefer to get out and about in the open spaces to help improve our community, we have something for everyone!

This is the perfect opportunity for someone looking to broaden their skills and help their local community whilst doing so!



What can I do as a Volunteer?

We have a range of volunteering jobs available, depending on the season, including:

Litter Picking
Allotment Work
Community Events
Library Work
Youth Work & more!

Must be over the age of 16 to apply.

Head to our website to download an application form.

We look forward to welcoming you onboard!

Our SSMPC councillors are also getting involved in our volunteering programme, regularly helping out at Beechcroft Library, getting stuck into youth work at our Youth Club and lending a helping hand at local events.

Youth Volunteering

Our Youth provision has grown leaps and bounds since starting in June, and we are now in a position where we would like people to come and volunteer their time whenever they can.

We have fun and openness at the heart of our work with lots of activities and games & there is something fun for everyone. We would like some help between the hours of 3.30pm-5.30pm Monday to Thursday. In order to volunteer time all persons will need to be DBS checked and of course will pay for this. For more information get in contact with Shea at 01793 823761 or email shea.stew@strattonstmargaret.gov.uk



12

Nationwide volunteering at the Youth Club allotment plot

Amazon tree planting volunteers



Community Grant Aid



Community Grant Aid

Do you want to start a community project, group or club?

Or do you already run an organisation that needs a boost to benefit the community?

Stratton St Margaret Parish Council is proud to support local through our grants scheme!

Bi-annually we award grant funding to local community groups, activities and projects helping enrich our community.

If you would like to apply for a grant, please complete an application form (which can be found on our website) and return to us via post or email to finance@strattonstmargaret.gov.uk.

So far in 2022 we have awarded grants to the following organisations; Make Lunch: £500, MHA Communities Swindon: £2000, Pegasus: £650, St Margarets Preschool: £2500, St Johns Ambulance: £1000, Thursday Club: £600 plus free use of the Meadowcroft Hall for 1 year.

Therefore we have £17,750 remaining for our October applications!

St Margarets Pre School

St Margarets Pre School were awarded £2,500 to replace the artificial grass within their outdoor play area.

The old grass had been down for at least 15 years and was looking tatty, worn, and generally becoming unsafe as it had areas that had ripped off. The new grass laid is artificial as it requires minimal attention but also provides safety for the children as they use the area.

All of our children will benefit from this project, and likewise many more children will benefit who join us over the next few years particularly as the new artificial grass is extra durable.



MHA Communities Swindon

MHA have used their grant to fund, produce, print and deliver monthly activity packs to their members. "Our members love receiving these and look forward to their arrival."

Funds are also being spent on supporting training costs for volunteers and obtaining references and DBS checks. Some members have been waiting quite some time for a volunteer befriender, and this funding allows us to enroll more people & keep the befriending programme going. "I spoke to one of our members and he was so pleased that we are able to continue to offer this service."

MHA Communities Swindon 07548774681

October Activity Pack

Halloween Word Scrabble Page 2

Quizzes Pages 3, 4, 5 & 6

Pumpkin Pie Recipe Page 7

Pumpkin Scone Recipe Page 8

Toilet Paper Pumpkin Craft Page 9

Autumn Crossword Pages 10 & 11

Spot the Difference Page 12

Answers Pages 13, 14

What's on at Walcot Friendship Group

Scam & Fraud Awareness Presentation	12 th October
Get Fit With Lin	19 th October
Ballroom Dancing with Jo & Mark	9 th November
Christmas Party	21 st December

Please note that there will be no Friendship Group on Wednesday 23rd November and no Conservative Club Lunch on both 17th & 24th November as I will be on holiday. Apologies for any inconvenience caused.

Beechcroft Library



Beechcroft Librarians, Sheila & Vicky

The Beechcroft Library and Community Hub always welcomes everyone!

Not only has it got a wide selection of books and audio books for everyone to choose from, it also runs a selection of activities each week, including an Art Group, a Friendship Group, Toddler Storytime, Lego and Chess/board game clubs. Come and have a look, there's sure to be something here for you to enjoy!

We also have 4 public computers available for use, no need to book these, just come along!

Did you know?

We have recently set up a Bereavement Group for anyone who may have suffered the loss of a loved one, family member or friend. The group is for people to meet, talk and come together with others for support and companionship. Refreshments are available. The group meets every Thursday at the library from 1.30pm to 3.30pm. It has proven to be very popular, please come along if you'd like to, everyone is welcome.

Bereavement Support Group

**Every Thursday
1:30pm - 3:30pm**

If you have suffered the loss of a loved one, we are here for you. Come and join our bereavement group to meet and talk with others for companionship & support during a difficult time.

Activities & refreshments will be available.

Grief is as unique as you are, and as individual as a fingerprint. Each person will be affected in their own specific way.

For more information, please contact us:
E-mail: beechcroft.library@strattonstmargaret.gov.uk
Tel: 01793 680030
Beechcroft Road, Upper Stratton, SN2 7QQ



NEW & IMPROVED!

BEECHCROFT LIBRARY OPENING HOURS*

MONDAY	CLOSED
TUESDAY	10AM - 7PM
WEDNESDAY	10AM - 7PM
THURSDAY	10AM - 7PM
FRIDAY	10AM - 5PM
SATURDAY	10AM - 5PM
SUNDAY	CLOSED

***FROM 26TH SEPTEMBER**

01793 680 030

Beechcroft Library, 188 Beechcroft Road, Upper Stratton, Swindon, SN2 7QQ.

Beechcroft Library has now changed their opening hours, so we're open for longer! Our new hours are: Tuesday, Wednesday and Thursday: 10am – 7pm and Friday and Saturday: 10am – 5pm. Come and see what we have to offer.

Community Book Service

OPEN FOR DELIVERY

DO YOU OR SOMEONE YOU KNOW HAVE DIFFICULTY GETTING TO & FROM YOUR LOCAL LIBRARY?

Beechcroft Library is now providing a free book delivery service for those who are unable to access the library!

Ran by volunteers from your local community, they choose up to 6 books & audio books that meet your preferences and deliver them to you every 3 weeks.

Fill out an application form and let us know what genres & authors you enjoy and we will arrange a volunteer to select and deliver them direct to your home.

To find out more & apply please contact Beechcroft Library using the contact details below.



Stratton St Margaret Parish Council and the Friends of Beechcroft Library are starting a home delivery library service for local residents who are unable to access the library.

This free service will be ran by volunteers from your local community for anyone who isn't able to get to the library and doesn't have someone to go for them. For example, the service can be used by people who are recovering from a long illness or a hospital stay etc.

Our volunteers are DBS checked and wear identification badges and we'll try and arrange for the same volunteer to visit you each time if possible.

Please call Beechcroft Library on 01793 680030 or email beechcroft.library@strattonstmargaret.gov.uk for more information.

What's On?

Councillor Surgery with Claire Crilly

Pop down to Beechcroft Library on the first Thursday of every month between 1pm and 2pm, starting in July, for a councillor surgery with Cllr Claire Crilly. Councillor surgeries provide an opportunity for any ward resident to go and talk their local councillor face to face. If you would like to obtain information or advice, make a complaint or enquire about services that the Council provides, these sessions are open for anyone to come and have a chat!



October Activities at Beechcroft Library



Thurs 13th 1:30pm - 3:30pm - Beechcroft Book Club

Wed 19th 1:30pm - 3pm - Get online week

Thurs 20th 7pm - 9pm - Stratton History Society

Sat 22nd 11am - 1pm - Lego Club

Thurs 27th 10am - 2pm - Citizens Advice Bureau (financial advice)

Fri 28th 1:30pm - 3pm - Children's Halloween Activities

Regular Free Activities & Groups

- | | | |
|--------------|----------------------|---|
| Tues | 13:30 - 15:30 | Fun Art Group (everyone welcome) |
| Wed | 10:00 - 12:00 | Friendship Group (connect with new friends) |
| | 13:30 - 15:00 | Tea & Tech (gain confidence with tech at our digital drop-in) |
| Thurs | 10:30 - 11:15 | Toddler Storytime (stories, rhymes & songs) |
| | 10:30 - 12:30 | Stratton Advice Point
(free confidential Welfare Benefits advice) |
| | 13:30 - 15:30 | Bereavement Group
(meet for support & companionship) |
| Fri | 11:00 - 12:30 | Sew, Knit & Natter Group |
| Sat | 10:30 - 13:30 | Board Games (Chess, Scrabble etc) |
| Sat | 11:00 - 11:45 | Saturday Story Time (ages 7 & under)* |



* Every 1st & 3rd Saturday of the month (1st & 15th Oct)

November Activities at Beechcroft Library



Thurs 10th 2pm - 3:30pm - Book Club

Wed 2nd 11am - 12pm - Bobby Van Home Security Talk

Wed 9th 11am - 12pm - Bobby Van Online Safety Talk

Tues 15th - Sat 19th - Road Safety Week

Sat 26th 11am - 1pm - Lego Club

Regular Free Activities & Groups

Tues	13:30 - 15:30	Fun Art Group (everyone welcome)
Wed	10:00 - 12:00	Friendship Group (connect with new friends)
	13:30 - 15:00	Tea & Tech (gain confidence with tech at our digital drop-in)
Thurs	10:30 - 11:15	Toddler Storytime (stories, rhymes & songs)
	10:30 - 12:30	Stratton Advice Point (free confidential Welfare Benefits advice)
	13:30 - 15:30	Bereavement Group (meet for support & companionship)
Fri	11:00 - 12:30	Sew, Knit & Natter Group
Sat	10:30 - 13:30	Board Games (Chess, Scrabble etc)
Sat	11:00 - 11:45	Saturday Story Time (ages 7 & under)*



* Every 1st & 3rd Saturday of the month (5th & 19th Nov)

Upcoming Events



Stratton St Margaret Parish Council hosts a variety of public events throughout the year ranging from festivals, to commemoration events.

Over the next few coming months, we have Halloween Activities for children, our annual Remembrance Service & a Christmas Carol celebration!

Friday 28th October 2022 - Halloween Activities!

Come down to Beechcroft Library for some childrens Halloween activities from 1:30pm - 3pm!

Friday 28th October 2022 - BEST Halloween Sessions

Join BEST 'be a better you' for some October half term holiday enrichment sessions at Meadowcroft Community Centre.

Sunday 13th November 2022 - Remembrance Service

Stratton St Margaret Parish Council would like to invite our residents to join us for the annual Remembrance Sunday Service to honour those who lost their lives fighting for our country.

Thursday 8th December 2022 - Christmas Carol Service

Come down to Meadowcroft Community Centre from 5pm -7pm and join us for our annual carol service. Featuring performances from Grange Infants choir & Swindon Brass Band!



FRIDAY 28TH OCTOBER
1:30 PM - 3 PM



HALLOWEEN ACTIVITIES



AT BEEHCROFT
LIBRARY



BEEHCROFT LIBRARY, UPPER STRATTON, SN2 7QQ 01793 68 00 30



Stratton St Margaret
Parish Council

Lest we forget



Sunday 13th November 2022

Stratton St Margaret Parish Council would like to invite residents to join our Remembrance Sunday Service on Sunday the 13th of November at 3pm at the Peace Memorial (on the corner of Grange Drive & Ermin Street).



Stratton St Margaret
Parish Council

Christmas Carol Service

Thursday 8th December

with Grange Infants Choir
& Swindon Brass Band

5pm - 7pm

Meadowcroft Community Centre

Join us for xmas
carols, hot drinks
& mulled wine!



BEST

BE A BETTER YOU

In partnership and fully funded by



FREE HALLOWEEN HALF
TERM
ENRICHMENT GROUP AT
MEADOWCROFT
COMMUNITY CENTRE

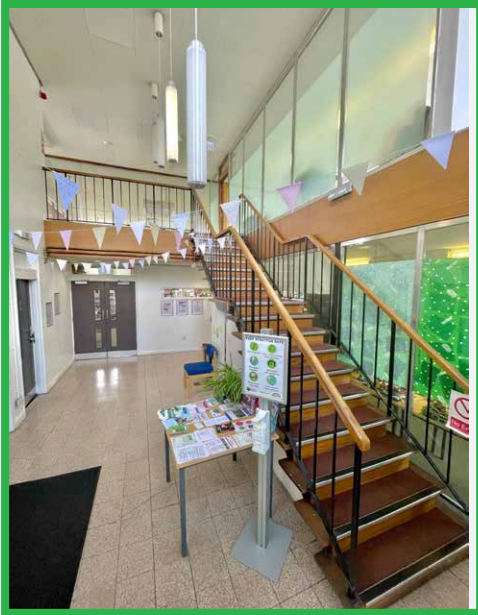
OCTOBER 28TH
1PM-3PM



Learn non-contact boxing, martial arts and football skills for FREE! Have fun and make friends at our parish-funded multi-sports session

TO BOOK
SEE EVENTBRITE
LINK BELOW

Parish Developments



On 28th September Stratton St Margaret Parish Council voted enormously in favour of installing a platform lift at Beechcroft library following from a library working group. The lift is now on order & expected to be installed around February 2023. This will help many people access the upstairs rooms for important sessions and activities like Lego and chess clubs, money advice workshops, bereavement groups and many more.

Meadowcroft Park Investment 2022 - 2023

We have had a very busy summer at Meadowcroft Park delivering some much needed improvements to this large and important park within our parish.

Over the last 2 years we carried out a great deal of consultation around the local area, to find out what people wanted us to address.

Car Park Extension

Our car park extension at Meadowcroft is now complete!

Completed on the 29th September. 30 new tarmac parking spaces have been provided.

Integral drainage solution has been built in beneath the surface ensuring a long sustainable life.

Our new picnic area alongside is still being completed. Flowering trees are to be planted alongside over the winter to soften the impact of this installation.



Completed on the 7th of October and is already popular! A large climbing unit 3 metres high and 10 metres long is the new focal point giving a great challenge to anyone of all ages. We really wanted to provide some new equipment that provided a big challenge to slightly older children and this delivers that. A new single point swing is also a big challenge for thrill seekers but it can operate more gently and is completely accessible for children and adults with minor physical disabilities. We have also provided several small spinning and springing equipment units for toddlers and 7 educational play boards on the fences.

Such is the scale and quality of this facility, we believe this is now one of the best play areas in Swindon!



Single Point Swing



Climbing Area



Springs



Before



After

Foot Path Renovation

The footpath running along Meadowcroft Field measures 340 metres in length and was bumpy, narrow and continually deteriorating.

2 entrances along its length and 1 at either end needed rebuilding as well as the entire linear surface.

This work is still ongoing and is currently about three quarters finished. The path is not only being resurfaced but widened out to 2 metres meaning there is plenty of space for people to pass each other.

This well used route will be completed by the end of October. This path will also feature 2 new benches along its length.

Grange Leisure

The Team at The Grange Leisure and Community Centre are delighted to announce their partnerships with new local businesses, K Body Sports Therapy, Little Dinos Club and Jen Mcdiarmid Nutrition and Wellbeing. We are super excited to be leading the way in wellbeing services and look forward to expanding this offering in the future.

K Body and Sports Therapy offers sessions in Sports Massage, Injury Consultations and Rehab & Pregnancy. Even if you don't do a sport, a sports massage can relieve tight muscles, help with sleep and reduce stress!

First appointments receive 10% off with code STRATTONNEWS & Grange Leisure Centre Members also benefit from 20% off all treatments! Get booked in online at <http://kbody sportstherapy.co.uk>

The Little Dinos Club will be offering baby and toddler Playasaurus classes. All classes will include, sensory, musical and developmental activities.

The classes are 45 minutes and will be held on a Thursday morning at various times depending on age

Sound, Shuffles and Sensory (12pm): suitable from 8 weeks to 8 months.
Music, Movement and Mess (10.45am): suitable for 8 months to 18 months
Dance, Discover and Design (9.30am): suitable for 18 months to 3 years

All classes can be booked via the website:
<https://www.thelittledinosclub.co.uk/playasaurus>

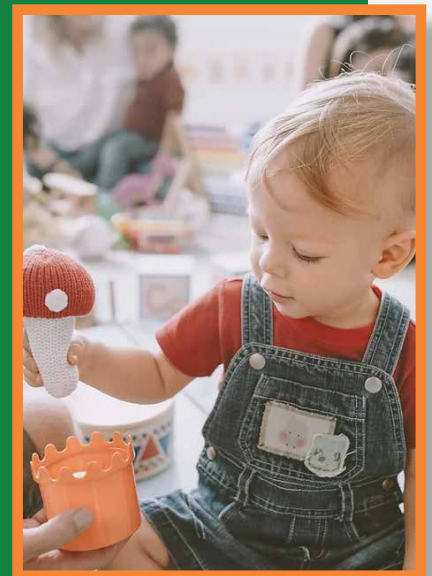
Jen Mcdiarmid Nutrition and Wellbeing. Jen is our registered Nutritionist who joined the team over the summer. Jen's approach to nutrition is to break away from diets and strict eating patterns where we can feel guilt, pressure and stress around food.

Jen will be offering support at the Centre as well as working with local support groups, and running evening workshops on various topics of health and nutrition. Email Jen on contact@jennifermcdiarmid.co.uk for more information.

Looking for your next event?

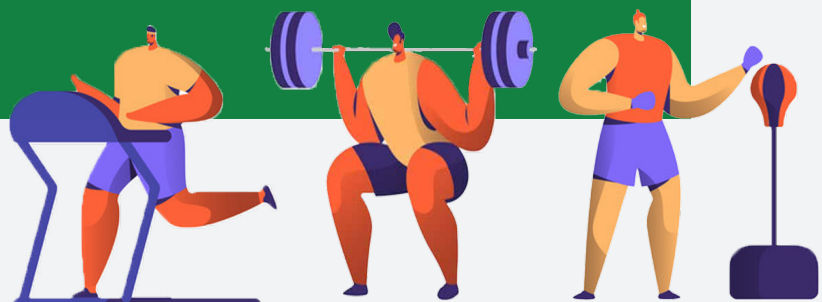
The Grange are delighted to announce further investment into our Private Function Rooms and Patio Area. For more info on our competitive rates and top service, please email reception@lexleisure.org.uk

We here at The Grange pride ourselves on ensuring our Member and Customers are fully supported in whatever their goals may be. Not only do we offer a central hub for health and fitness, we also lead the way in supporting the overall wellbeing of the local community!



Opening Times

Mon - Fri 06:30 - 22:00
Sat - Sun 08:00 - 18:00



Stratton Police update

Over the last three months of the year we will be focusing on key dates such as Halloween, bonfire night and the build up to Christmas. We remind everyone to be respectful of those that don't wish to get involved in trick or treating. We will leave Halloween posters at the local library for those that would like to display that they are not wishing to have visitors.

C o m m u n i t y

The community remain at the heart of everything we do and the information you provide us with means we can look to actively target areas most affected by ASB. Our Swindon Police Facebook page will advertise community consultation events that will give us the opportunity to speak with you directly on the issues that are of concern.

It is worth reminding that in case of an emergency please contact 999 and for non-urgent crimes and incidents please call 101 or alternatively you can report a crime on our website www.wiltshire.police.uk. To contact your local CPT about a local community-related matter, such as a school visit then please email SwindonAreaCPT@Wiltshire.police.uk



Your Local Policing Team

The Local Stratton team has seen some recent changes. Sergeant Andy Poole and PCSO Charity Riley have recently left the team. Pc Andy Deller, PCSO Zeb Muhammed & PCSO Guodong Xu are still with the team.

Over the last 3 months we have been concentrating on hot spot area's for anti-social behaviour.

Anti-Social behaviour is one of the most common areas that affect communities and indeed is one of the most talked about subjects that people wish to speak with us while out on patrol.

Over the past 3 months (July – Sep 2022) there have been 31 reports of anti-social behaviour in Stratton, which is more than double from the same period in 2021 (July – Sep)!

We are working with partner agencies, the local parish council and schools to try and reduce the anti-social behaviour. We are thankful that the Parish have been working hard to help provide things such as a skate park and other parks across the Stratton area to provide things for the children and young adults to occupy their time with. We also work with the youth worker from the parish to also help engage with the community.

- Best Wishes, the Stratton team.



PC Deller



PCSO Xu



PCSO Muhammed



Autumn Activities



S	P	U	M	P	K	I	N	N	R	O	C	A	N
D	N	I	A	U	E	N	O	C	E	N	I	P	V
O	E	K	O	R	S	C	A	R	E	C	R	O	W
E	E	R	R	R	N	T	E	H	R	V	E	R	E
N	L	C	O	N	K	E	R	A	A	R	B	N	E
E	N	W	S	E	V	A	E	L	F	N	E	E	N
S	E	A	S	O	N	W	O	L	R	B	O	V	E
C	U	E	E	B	E	I	T	O	O	R	E	E	I
E	E	N	A	D	K	E	R	W	S	E	O	R	U
N	E	L	P	A	M	L	A	E	T	E	N	G	F
E	H	L	A	M	B	E	R	E	W	Z	O	R	O
N	E	M	E	R	W	M	R	N	E	E	W	E	G
C	U	P	L	A	U	T	U	M	N	R	S	E	S
T	U	N	S	E	H	C	Z	A	M	W	T	N	E

- HALLOWEEN
- AMBER
- CHESNUT
- BREEZE
- FROST
- SEASON
- AUTUMN
- EVERGREEN
- SCARECROW
- ACORN
- PUMPKIN
- PINECONE
- DEW
- CONKER
- MAPLE
- TREE
- FOG
- LEAVES



FAQ's



Can you cut the grass outside my house?

SSMPC mow all of the grass on the land we own every 3 weeks from March to October. Please get in touch to find out if the grass is our responsibility.

Can you fix the broken street light on my road?

Swindon Borough Council is responsible for all of the lighting across Swindon. Head to their website to report a faulty or damaged light (swindon.gov.uk)



What time does the Youth Club run?

Our Youth Club runs from Monday - Thursday from 3:30pm to 5:30pm at Meadowcroft Community Centre for young people aged 10-14 years old.

Who makes the decision on my grant application?

All grant applications are taken to a full council meeting where councillors vote to make a decision.



How do I get added to the allotment waiting list?

Please email us at info@strattonstmargaret.gov.uk with your name, address, contact details and preferred allotment site.



Can I buy a grave in Stratton?

SSMPC owns 2 cemetery sites, Green Road and St Margarets. You must live within the parish boundaries to purchase a plot as grave spaces are limited and residents take priority.



Did you know?



Proper roads, drainage and sewers were not installed in the Parish until the late 1890's.

During WWII in the summer of 1940 members of Stratton St Margaret Women's Institute bottled more than 800lbs of jam.

In 1978 the Grange Drive community centre was built, now known as Grange Leisure, the first manager being Bob McMillan.

We have around 5 acres of wild flower meadows that we have created. We plan to add another acre this winter across 4 sites and will be harrowing and reseeded these areas to add species richness.

Throughout the year 2021-2022 Stratton Parish Council carries out approximately 4 burials every week (on average).

2022 Meetings

Date	Event	Start
October 2022		
5 th Oct	Finance	7pm
12 th Oct	Property	7pm
19 th Oct	Planning	7pm
26 th Oct	Youth	7pm
November 2022		
2 nd Nov	Open Spaces	7pm
23 rd Nov	Planning	7pm
30 th Nov	Full Council	7pm
December 2022		
7 th Dec	Personnel	7pm
14 th Dec	Planning	7pm
21 st Dec	Finance	7pm

Date	Event	Start
January 2023		
11 th Jan	Full Council	7pm
18 th Jan	Property	7pm
25 th Jan	Planning	7pm
February 2023		
8 th Feb	Open Spaces	7pm
15 th Feb	Planning	7pm
22 nd Feb	Youth	7pm
March 2023		
15 th March	Personnel	7pm
22 nd March	Planning	7pm
29 th March	Full Council	7pm

Stratton St Margaret Parish Council is committed to making local government open and accessible. All of our meetings are open to the public and press and are held in Meadowcroft Community Centre, Addison Crescent, Swindon, SN2 7JX. With the exception of the Annual Assembly which is due to be held at Grange Leisure Centre, Grange Drive, Swindon SN3 4JY. Before

every meeting the Agenda can be viewed on our noticeboards at Meadowcroft Community Centre, Beechcroft Library and Grange Leisure Centre (as well as on our website). All minutes are uploaded on the website.



Useful Numbers

Beechcroft Library	01793 680030
BEST Trust	01793 200124
Community Centre	01793 823761
Drove Vets	01793 821821
Grange Leisure	01793 825525
Great Western Hospital	01793 604020
Merchiston Surgery	01793 823307
Open Spaces	01793 823761
SSM Womens Institute	01793 829900
St Margarets Church	01793 826505
Stratton Parish Council	01793 823761
Swindon Carers	01793 531133
Swindon Mind	01793 432031
Swindon Sexual Health	01793 604038
The Pest Controller	07557 023940



@ssmpcswindon



@ssmpcswindon

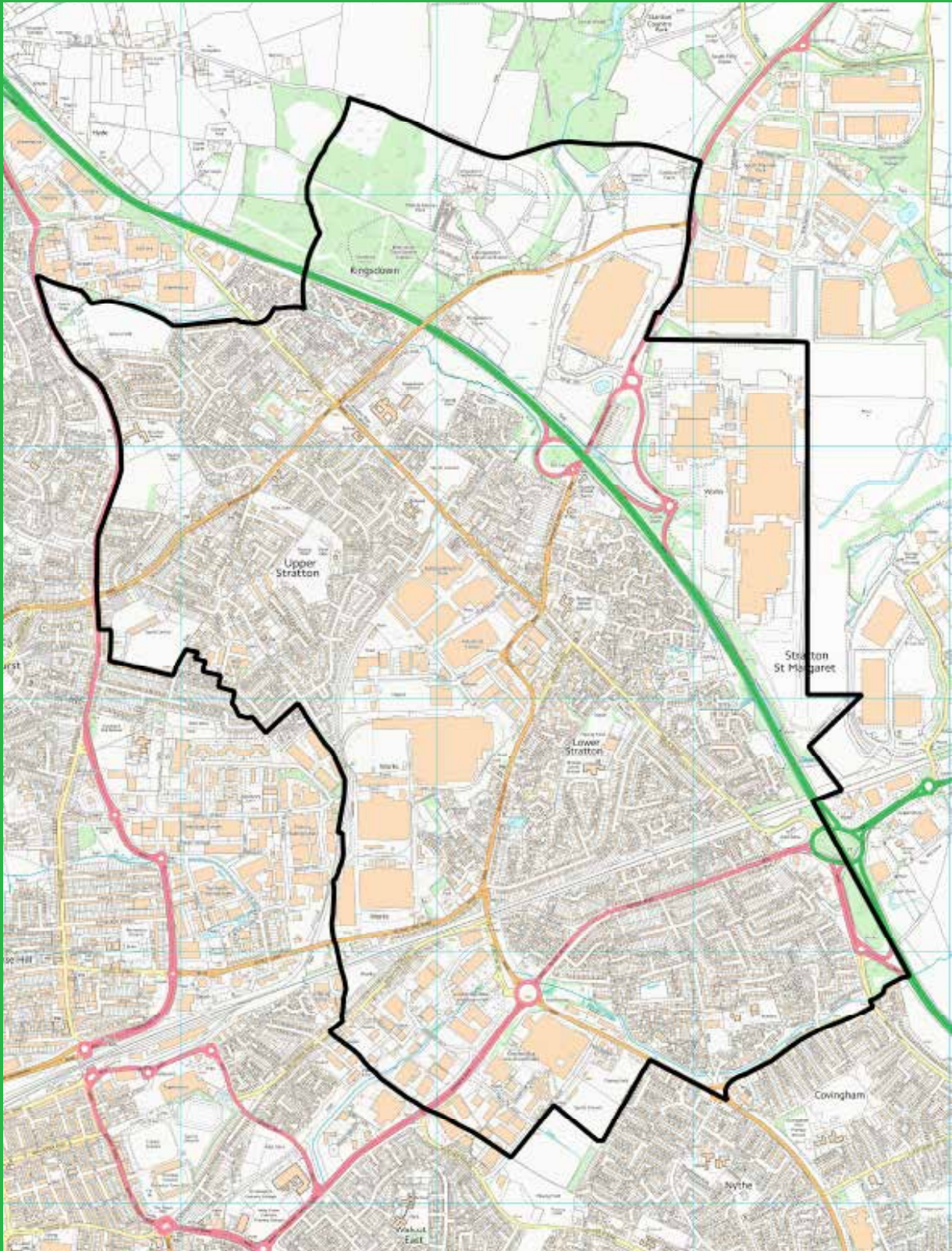
Co-op Funeral Service	01793 539432
Hillier Funeral Service	01793 522797
Pearce Funeral Service	01793 832072
G&L Evans Funerals	01793 237852
Franklin Memorials	01793 766715
AE Smith Funerals	01793 237885
Kingsdown Crematorium	01793 822259

Beechcroft Infants	01793 700220
Beechcroft Infants	01793 823278
Colebrook Junior	01793 823057
Grange Infants	01793 823278
Grange Junior	01793 823278
Kingsdown	01793 822284
Ruskin Junior	01793 332107
St Catherines Primary	01793 822699
St Lukes Academy	01793 705566





Stratton St Margaret
Parish Council



Serving the Community since 1894