



Stratton Parish News

SPRING 2022 - ISSUE 001

Serving the Community

In This Issue..



Welcome from the Chairman
Page 2



Upcoming Parish Events
Page 12





Welcome from the Chairman

Lower Stratton Ward, Chairman Robert Jandy
E: cllrrobertjandy@strattonstmargaret.gov.uk

Words by Stratton's Chairman **Robert Jandy**

Ch-ch-ch-changes

With one municipal year coming to an end and a new one on the horizon, 2021 was certainly a time of re-evaluation, planning and re-organisation for the Parish. We have learnt a lot during the various lock-downs, whether it was providing services, communication or the internal organisation. April 2022 will start seeing the fruition of this work. The start of this renewal was the recruitment of a full time Parish Clerk. After an open and strict competition the role was offered to Amy Loxton. Many of you know Amy, but I would like to take this opportunity to formally welcome her to the Parish. There is a lot of work ahead but she has the full support of the Council. There will also be further roles to fill so watch this space.

Getting Outside

Although residents have started going outside, there are still some who are anxious and cautious. Which is quite understandable.

The emphasis for the next year will be to increase outside activities by working with local groups and societies but in a safe environment.

Watch out for tree planting and parish sanctioned litter picks : getting out; helping the community and getting some fresh air. There will be a schedule coming out to cover the whole Parish.

Communication

Remember the only official Parish information will be on our official website, Parish Facebook pages and official newsletter. Any other material is not sanctioned by the Parish and the content may be incorrect or not up to date so check with the office if there are any issues.

I realise that not everyone has social media, so could I ask if you have a friend or relative who is in that situation to contact the parish on 01793 823 761, to be placed on a distribution list for leaflets, newsletters and parish information.

Parish Councillor Surgeries

If there are any Parish issues you wish to discuss then surgeries are held virtually every last Saturday of the month at 10:00 on Zoom, but Skype and mobile are available. If urgent, my email is cllrrobertjandy@strattonstmargaret.gov.uk. Please book ahead.

Meet Your Council



Lower Stratton Ward

Cllr Anne Brooker
e: cllrannebrooker@strattonstmargaret.gov.uk



Lower Stratton Ward

Cllr Laura Butcher
e: clllaurabutcher@strattonstmargaret.gov.uk



Lower Stratton Ward

Cllr Tom Butcher
e: cllrtombutcher@strattonstmargaret.gov.uk



Lower Stratton Ward

Cllr Glenn Castle
e: cllrglenncastle@strattonstmargaret.gov.uk



Merton Ward

Cllr Claire Crilly
e: cllrclairecrilly@strattonstmargaret.gov.uk



Upper Stratton Ward

Cllr Alison Foley
e: cllralisonfoley@strattonstmargaret.gov.uk



Coleview Ward

Cllr Barrie Jennings
e: cllrbarriejennings@strattonstmargaret.gov.uk



Lower Coleview Ward

Cllr Pratap Mane
e: cllrpratapmane@strattonstmargaret.gov.uk



Upper Stratton Ward

Cllr Andree Murphy
e: cllrandreemurphy@strattonstmargaret.gov.uk



Upper Stratton Ward

Cllr Tara Page
e: cllrtarapage@strattonstmargaret.gov.uk



Upper Stratton Ward

Cllr Teresa Page
e: cllrteresapage@strattonstmargaret.gov.uk



Coleview Ward

Vice Chairman Tim Page
e: cllrtimpage@strattonstmargaret.gov.uk



Lower Stratton Ward

Cllr Roger Smith
e: cllrrogersmith@strattonstmargaret.gov.uk



Upper Stratton Ward

Cllr Joe Tray
e: cllrjoetry@strattonstmargaret.gov.uk



Upper Stratton Ward

Cllr Ravi Venkatesh
e: cllrravivenkatesh@strattonstmargaret.gov.uk

Local Councillors

Local Councillors are elected by the community to decide how the council should carry out its various activities. They represent public interest as well as individuals living within the ward in which he or she has been elected.

In March we welcomed two new councillors, **Oladapo Ibitoye & Matthew Vallendar** **3** representing Upper Stratton & Coleview wards (contact details TBC).

PROPERTY

Meadowcroft Community Centre

Our community centre has big plans in the pipeline over the next few years. We are looking to extend the car park to alleviate the pressures put on the local area, especially on weekends, when the park is extra busy with football club activity. Plans are also underway to extend the children's play area to provide more for all age groups.

Our community hall is always available for hire for £14.42 an hour, please contact info@strattonstmargaret.gov.uk to make an enquiry.

Meadowcroft Recreational Grounds

Spring has sprung! Opposite our community centre we have a large recreational field spanning approx 12 acres! Make the most of this vast open space this Spring!

For more information call us on: 01793 823761 or email info@strattonstmargaret.gov.uk

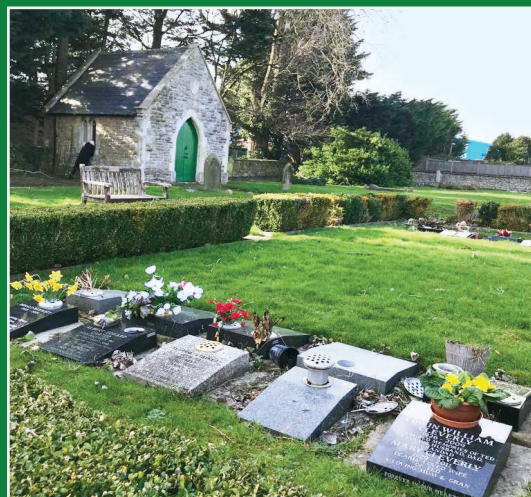


Green Road Cemetery

Green Road Cemetery is situated on Green Road in Upper Stratton. It is a beautiful, quiet cemetery with its own Victorian chapel which was built by the non-conformists in 1869. The chapel is just big enough for a preacher and a coffin.

Ceremonies in this chapel are very rare now. The cemetery is closed to new full burials, however, we have plenty of ashes burial plots available for purchase.

The chapel is in good condition structurally but we are seeking some grant funding to replace the timber floor inside which has become rotten and unsafe.



Dorcan Sports Pavilion

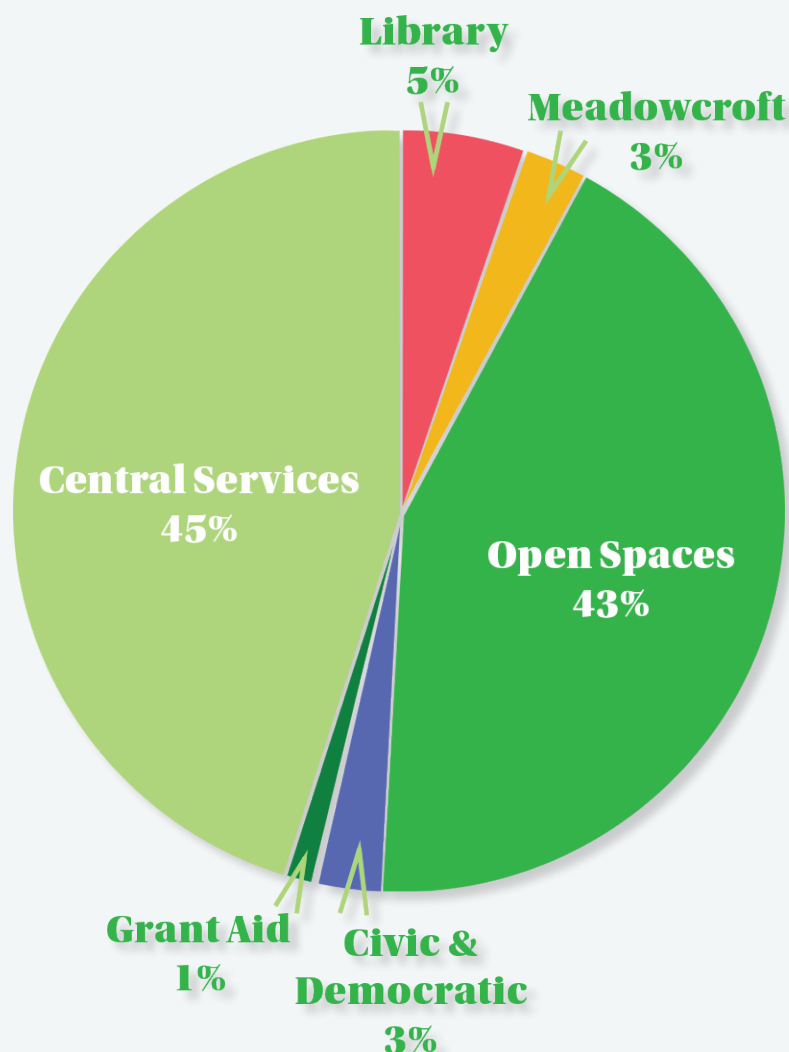
Plans have now been agreed to demolish the derelict sports pavilion in Dorcan/Greenbridge. The building is in a state of disrepair & unsafe, and with little to no demand, the decision was made. We do however hope to introduce a new facility here some time in the future with the help of third party investors. If you have any suggestions please get in touch at info@strattonstmargaret.gov.uk



Committee



FINANCE



Following a thorough and careful process which started in October, the Council resolved to continue to fund services and projects through a precept of £187.85 per band D property; a decrease of £2.19 per year per Band D property.

The chart shows a general overview of where the precept is spent.

The council's finance team have been working very hard throughout the year to improve and develop the councils systems and controls. This has included a complete overhaul of the allotment administration, an improved system for internal audit and an in depth budget setting process to offer all members of the parish a clear, reliable and transparent service

PLANNING & HIGHWAYS

Committee

Although not a decision-making body, this committee meets regularly, twice a month, to look at planning applications within Stratton Parish and comment on developments in our neighbouring parishes.

Parishioners are always welcome to attend and air their views and to observe our workings. The committee can 'call-in' to the Borough Council those plans it believes to be contentious. Committee members are kept informed concerning road works as it affects, or might affect, our local roads.

In 2019 the planning committee introduced a neighbourhood plan

under the Localism Act 2011.

The aim of this plan is to give communities the right to shape and develop their areas. The Stratton St Margaret neighbourhood plan has been prepared by residents and led by Stratton St Margaret Parish Council and shaped by various surveys and public consultations to accurately reflect the needs and wants of the community.



OPEN SPACES

Our Open Spaces Management team have been doing what they do for decades and we think their experience shows. It might surprise you how busy and complicated public land management can be, so please read on to get a taste of it.

“It is rather like managing a giant labyrinth that resets every night, meaning each morning you face fresh challenges. We have to be flexible and efficient in order to keep on top of the challenges.”

In April 2017, we adopted all of the land owned by Swindon Borough Council in the parish (with a few exceptions, such as Greenbridge roundabout). We had to increase our resources in order to do this and are now responsible for most of the public environment, except the road surfaces, streetlights and street trees.

We spend around £75,000 a year clearing rubbish and emptying our 137 public bins. We litter-pick all public land throughout the parish on a strict rota, from top to bottom (everywhere we are responsible for gets a visit every 3 weeks). This includes all of the pavements. There are many areas which are very hard to reach, quite literally, and if you know of an area that is dirty then please get in touch so we can investigate it. It is remarkable how much rubbish is created in our parish and we all need to do our bit to reduce this.

We have given out free litter-pickers to many people over the years and those people continue to help us by collecting rubbish and leaving the bags inside or next to our public litter bins. Our parish councillors also run public litter picking events periodically, each focusing on the areas where they live.

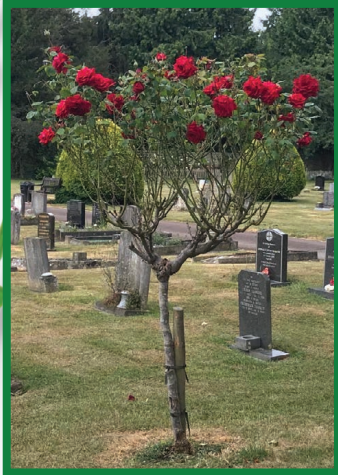
If you fancy getting involved in this, then please do let us know.

We will explain other services further in future newsletters and they include;

- Burial services. We have 2 cemeteries and on average carry out one burial every 6 days
- We have 10 play areas which are formally checked every week. Over the last 5 years we have spent around £40,000 **every year** on new equipment and general upgrades!
- Allotments. We have 2 sites with around 145 plots in total!
- Grass cutting. We have approx 79 acres of grass and the cutting season is getting longer each year due to the impact of climate change. Last year we started grass cutting in March and didn't finish until the end of October. We cut everywhere at least 10 times per year. Areas that are more important to residents are cut as many as 15 times per year.
- Hedge cutting. We have over 2 miles of hedges & many need cutting twice a year. We try to avoid bird nesting season but in some areas where alleyways are narrow this is unavoidable.



Meet our Open Spaces Team



Stratton St Margaret's Grounds Team

- We hire contractors to help us in our work. On average we have a contractor working somewhere on our land every week. This tends to be tree surgery, welding or civils.
- General landscaping improvements. We plant trees, shrubs and flowers every year. We also prune shrubs and carry out mulching, weeding and watering when we can.
- We manage around 20 wild flower areas and have some very specialist resources for doing so effectively. We want to increase these areas in order to help biodiversity.
- We maintain several car parks, bus stop areas, one underpass and 5 small shopping areas. This does not include Greenbridge Retail Park.
- We put up Christmas decorations each year and help with community events such as our Remembrance Sunday service.
- We assist the general public with land registry searches on private land that isn't being maintained. Once we identify the land owner we contact them and encourage maintenance work to be done.
- We liaise with government bodies and utility providers such as the Environment Agency and Thames Water to ensure their assets are functioning properly.
- We plan ahead. Our Open Spaces Officer has a replacement program in place for all vehicles and agricultural machinery. We also need to plan many of our larger projects months or even years in advance.

Spring

Seasonal

Work

Grass grows fastest in the spring. The sites start to get busier as well. We spend most of spring, cutting grass and collecting litter. There is so much of it that there is little time for anything else in spring. It takes 3 weeks to cut all of it and when we have finished, we start again. In summer grass growth slows, allowing other project work to be done. We do also plant flowers in spring, paying more attention to the flower beds that we have.



Allotments

In Stratton we have 2 allotment sites available to rent for those living within the parish (St Phillips & White Hart)

Plot Sizes:

We only have one Full Plot across both allotment sites measuring 12m x 45m – it's enormous!

A Half plot is roughly 12m x 22m which is still very big.

A Quarter plot suits many people at 6m x 22m.

Prices:

Range from £10-£80 (annual cost) Depending on size etc.

Currently all of our plots are allocated, however if you are interested in joining our waiting list, the wait is approx 1-2 years. To be added to the list you must live within the parish and provide your full name, address, & contact details.

Community Grants

Bi-annually, Stratton St Margaret Parish Council award grant funding to support local community groups, activities and projects helping enrich our community.

BEST - Be a Better You

“A massive thank you to Stratton St Margaret Parish for a community grant to put on FREE holiday programmes for the young people, aged 5 - 16 years old, who live within the parish.”

BEST - Be a Better You is a registered charity that started in 2020. We provide positive experiences for young people through sports training, group sessions and 121 mentoring, with the hope that the young people we work with go on to lead successful lives. Our group enrichment sessions help increase self esteem and confidence, decrease social isolation, build skills in different sports and most of all, promote healthy fun!

BEST will be running sports enrichment sessions during the school holidays over 2022, at Meadowcroft Community Centre. We will be offering a mix of basic boxing, martial arts and football skills, team games and lots of fun, with fully trained BEST sports coaches and mentors.

We held our first session on the 25th February and you can see photos and videos of the great time we had, with more information on future dates and times, by visiting the BEST Facebook page or emailing us on info@BESTrust.co.uk.





Stratton Policing Team

“Stratton Policing would like to thank Stratton St Margaret Parish Council for funding our bike marking kit.”

Stratton has seen a rise in bike thefts and so the kit that has been purchased will enable us to hold several bike marking events. The kit allows us to mark up bikes with a unique code. The Sticker used is to show it has been marked, this can reduce the risk of it being stolen in the first place. When a bike is found the unique code can be scanned which gives Police information on the owner. The bike can then be returned.

So far we have held two events and received some lovely feedback. Please keep a look out on social media for more bike marking events.

Stratton Advice Point is a voluntary organisation which provides free confidential advice on Welfare Benefits to people of Stratton and neighbouring areas. It is a member of Advice UK and has been generously supported for many years by Stratton St Margaret Parish Council.

It was initially set up in 1985 with the encouragement of Wiltshire Law Centre and Swindon Borough Council and has been running ever since. Over 36+ years it has helped thousands of people to claim the benefits to which they are entitled. To this day we estimate a total value of £2 million in benefits successfully claimed.

The Advice Point is based in Beechcroft Library in Upper Stratton where a small team of dedicated volunteers run drop-in sessions every Thursday, from 10.30 to 12.30.

The volunteers can help with benefit checks and give advice on the range of welfare benefits available. They guide claimants through the application process and provide assistance in completing relevant forms. They help clients who have experienced sudden life changing situations such as redundancy or ill health. Often helping one person means an entire family is helped, perhaps across the generations.

“Our objective is to maximise the income of those who need it most by helping them to apply for any benefits to which they are entitled. This reduces stress, enabling them to lead fuller lives and participate more in social activities, offsetting some of the isolation associated with deprivation & poverty.”

Visit www.strattonadvicepoint.co.uk for more information.

Stratton Advice Point



The Friends of Beechcroft Library

The Friends of Beechcroft Library is a registered charity working closely with the Parish to make our lovely library a vibrant community hub, and we are very grateful for the Parish’s continuing support and grants. These grants (together with fundraising efforts) enable purchases of equipment, books, materials and services which enhance the library and improve the life of the community.

We target our sessions to all age groups, from the very young to the not so young, there is something for everyone. Our aim is to help reduce loneliness and isolation through our community hub.

Turn to **page 10** to find out more about what regular activities we have on & come along to support us!

Beechcroft Library

Beechcroft Library and Community Hub on Beechcroft Road welcomes everyone! Whether you wish to loan a book, take some peaceful time out, use one of the public computers, join one of our many weekly activities or come along to our various events.

We always ensure we have a wide variety & genres of books on offer so there is something for all ages and interests! (Including large print and audio books).

We offer a range of free public activities including a Fun Art Group, Computing for the Terrified, and Toddler Storytime.

We also host an Advice Point each week, which provides free confidential Welfare Benefits advice. This service is ran and organised by dedicated volunteers from the local community & has been running for over 35 years! (The Friends Of Beechcroft Library - registered charity organisation).



Beechcroft Fun Art Group



Beechcroft Library Chess Club

2021 Macmillan Coffee morning, over £550 was raised for Cancer Support!



Interested in Volunteering?

Volunteers are often the glue that holds together a community. We always welcome a helping hand at Beechcroft Library!

Want to find out more? Contact us on info@strattonstmargaret.gov.uk or pop in and meet the team!



April Activities at Beechcroft Library



Friday 22nd April - World Earth Day! Come and explore our collection of books on the environment

Sat 9th - Fri 15th - Easter Activities for Children

Sat 23rd 11am-12:30pm - LEGO Club is restarting!



Regular Free Activities & Groups

*Library will be closed for Good Friday & Sat 16th

- Tues 13:30 - 15:30 Fun Art Group** (everyone welcome)
- Wed 10:00 - 12:00 Friendship Group** (connect with new friends)
- 13:30 - 15:30 Computing for the Terrified**
(improve your digital confidence)
- Thurs 10:30 - 11:15 Toddler Storytime** (stories, rhymes & songs)
- 10:30 - 12:30 Stratton Advice Point**
(free confidential Welfare Benefits advice)
- Fri 11:00 - 12:30 Sew, Knit & Natter Group**
- Sat 10:30 - 13:30 Board Games** (Chess, Scrabble etc)
- Sat 11:00 - 11:45 Saturday Story Time ***



* Every first Saturday of the month (2nd April)

What's On?

World Earth Day 2022

For Earth Day 2022, we need to act (boldly), innovate (broadly), and implement (equitably).

It's going to take all of us. All in. Businesses, governments, and citizens — everyone accounted for, and everyone accountable.

A partnership for the planet.



Chairman's Charity Coffee Morning

On Saturday 19th March, Beechcroft Library held a coffee morning to raise money for the Chairman's Charity including homemade cakes, live music & activities for children to enjoy. The event was a great success with plenty of delicious cakes and a brilliant attendance from the local community including The Mayor of Swindon, Councillor Garry Perkins.

The Chairman's chosen charity during March 2022 was The British Liver Trust, the largest UK liver charity for adults that lead the fight against liver disease and liver cancer.



We are very proud to have raised £266 from this event to contribute to such an important cause & we would like to say a big thank you to everyone that was involved and made donations!

Keep an eye out for more fundraiser events at Beechcroft Library!



Upcoming events

Stratton St Margaret Parish Council hosts a variety of public events throughout the year ranging from festivals, to commemoration events.

Over the next few coming months, we have the Annual Assembly, The Queens Jubilee and multiple Easter fun days.

Thursday 14th April 2022 – Easter Activities

Come down to Beechcroft Library from 10:30am – 12pm for a day of easter egg hunting! Find the eggs hidden around the library and win a prize!

Wednesday 13th April & Friday 22nd April 2022 – BEST charity sports sessions

BEST- be a better you, are hosting free Easter holiday enrichment sessions. Available for children aged 5-16 years old, this is a great opportunity to learn new skills, meet new friends and build confidence!

Wednesday 27th April 2022 - Annual Assembly

The Annual Parish Assembly is an opportunity for members of the public to learn what activities the various Organisations in the parish carry out during the year. It is also an opportunity to raise any issues with the Parish Council.

Sunday 5th June – Queen's Jubilee Festival

This year we are celebrating the Platinum Jubilee in June to honour Queen Elizabeth II's 70-year reign. Hosted on the field at Grange Leisure Centre, there will be afternoon tea, a beer tent, tombola & games, a dog show, inflatable fun & much more. Bring your chairs & picnic blankets with your most patriotic self for this British street party style event! All are welcome to attend!



Stratton St Margaret Parish Council presents

Stratton Celebrates The Queen's Jubilee 2022

at the Grange Field from 12 noon

In Partnership with
Grange Drive, Swindon, SN3 4JY



In partnership and fully funded by



BEST
BE A BETTER YOU
www.bestrust.co.uk

FREE Easter Holiday Enrichment Sessions

On the 13th and
22nd of April
1pm - 3pm @
Meadowcroft
Community Centre

- For ages 5 - 16 years old
- Learn basic boxing, martial arts and football skills
- Make friends
- Build confidence!

To book your place, please
contact us via email on
info@bestrust.co.uk or call
us on 01793 200124

2022 Annual Assembly

Members of the public are warmly invited to
attend the Parish Annual Assembly

7-9pm, Wednesday 27th April 2022

Grange Leisure Centre, Grange Drive, Swindon, SN3 4JY

Come along to have your say, ask those questions, and
enjoy some nibbles, tea and coffee.

Tel: 01793 823 761

E: info@strattonstmargaret.gov.uk



Meadowcroft Community Centre
Addison Crescent, Swindon
SN2 7JX

EASTER EGG-STRAVAGANZA

at Beechcroft Library

Colouring Competition

Pop into the library from **Wednesday 6th April**
to collect your sheet.
Every entry will win a small prize
& the winner will receive a large prize!

Easter Treasure Hunt

Thursday 14th April 10:30am-12pm
Find the Easter Egg's hidden around the
Library. Prizes for everyone who
finds an egg!



Grange Leisure

Since Parkwood Leisure has been working alongside the Parish, Grange Leisure has seen many benefits and growth within the last few years. During times of Covid and the centre having to be closed, we wanted to ensure when we reopened, it was a safe environment and to showcase our outstanding facilities at Grange.

The refurbishment of the Leisure Centre has seen the whole place take on a new modern feel, with updated facilities available such as our new coffee shop and **FREE** to use Soft Play.

The 55-station gym, including all of the latest equipment is available for everyone to come and enjoy! Whether that's Junior gym sessions or for a workout, programs and inductions!

We have a **BRAND NEW** class program with over 30 classes available, Les Mills classes, Indoor cycling studio, Walking Netball, HITT and Pilates available for all!

We have 4 x Badminton Courts available to book and also Indoor football!

Our indoor cycling studio is the perfect opportunity to learn spinning whether that's with family or friends, you can come down and enjoy a Les Mills virtual class (these include RPM and Sprint classes)

Studios are available to hire, whether that's community events, dance schools, meeting rooms or even venue hire, we have everything available for you!

Looking to book your perfect event? Whether that's kids birthday parties, wedding receptions (With our indoor marquee), surprise parties, dog shows and many **MORE!!!**

Our Artificial Grass pitch is the best priced pitch in **SWINDON!** Perfect for a kick about with your friends or even teams looking to host somewhere to train.

We always continue to serve the community, ensuring we provide the best to all of our members, guaranteeing everyone leaves with a smile on their face!

We look forward to welcoming you to Grange Leisure and Community Centre.



What's On?

Opening Times

Mon - Fri 06:30 - 22:00
Sat - Sun 08:00 - 18:00

GROUP FITNESS TIMETABLE

MONDAY			FRIDAY				
Low Impact Circuits	09:00-09:45	Simon	SS	Grit	08:00-08:30	Sam	S1
Sprint	09:15-09:45	Sam	IC	BodyBalance	08:45-09:45	Sam	SS
BodyBalance	10:00-11:00	Sam	SS	RPM	09:30-10:15	Claire	IC
RPM Express	12:15-12:45	Claire	IC	Circuits	10:15-10:45	Claire	SS
Sprint	17:30-18:00	Sam	IC	HIIT	12:15-12:45	Ali	S1
BodyAttack	18:00-19:00	Sam	MH	Grit	17:30-18:00	Lydia	S1
BodyBalance	19:00-20:00	Sam	MH	RPM	18:00-18:45	Sophie	IC
TUESDAY			SATURDAY				
Boxercise	10:00-11:00	Sam	SS	Total Abs	08:15-08:45	Claire	MH
LI Body Conditioning	11:00-12:00	Sam	MH	BodyPump	09:00-10:00	Claire	MH
Abs/Core	12:15-12:45	Sam	SS	Powerhoop	09:00-10:00	Sarah	SS
HIIT	17:30-18:00	Claire	SS	Zumba	10:15-11:15	Sarah	MH
RPM	18:15-19:00	Claire	SS	LBT	11:15-12:00	Claire	MH
Fitness Yoga	18:15-19:15	Nadia	SS				
WEDNESDAY			SUNDAY				
Grit	07:30-08:00	Sam	S1	BodyAttack	09:00-10:00	Simon	SS
Zumba	09:15-10:15	Jade	MH	RPM	10:00-10:45	Sophie	IC
RPM	17:30-18:15	Caroline	IC				
Bounce DanceFit	18:00-19:00	Ann-Marie	MH				
Pilates	18:30-19:30	Nadia	S1				
Zumba	19:15-20:15	Jade	MH				
THURSDAY			LOCATION KEY				
BodyPump	09:00-10:00	Nicky	SS	IC: Indoor Cycling			
BodyAttack	10:00-11:00	Sam	MH	MH: Main Hall			
LI Body Conditioning	11:00-12:00	Sam	MH	S1: Studio 1			
HIIT	12:15-12:45	Stephanie	S1	SS: Stratton Suite			
BodyPump	18:00-18:45	Claire	IC				
Sprint	18:00-18:30	Sam	MH				
Core and Stretch	18:45-19:45	Sam	SS				

OPENING AND CLOSING TIMES
Monday - Friday 06:30 - 22:00
Saturday - Sunday 08:00 - 18:00

Junior Flexible Membership

Our junior membership, ages 13 to 16 with restricted times and classes on a flexible basis.

£19.00 per month

Flexible Monthly Contract

Our standard membership paid monthly with a one month cancellation period.

£24.99 per month

Annual Membership

This is a payment upfront membership that covers you for the year. Not only does it take out the hassle of making monthly payments, but you are only paying for the price of 10 months instead of the price of 12. Perfect for those that are dedicated to the gym.

£250.00 per year

NHS/Emergency Services Members

£16.00 per month

Corporate Members

£19.00 per month

VIRTUAL TIMETABLE

MONDAY 06:30 - 22:00		WEDNESDAY 06:30 - 22:00		FRIDAY 06:30 - 22:00	
06:40 - 07:10	Sprint	06:40 - 07:10	Sprint	06:45 - 07:15	Sprint
07:15 - 08:00	The Trip	07:15 - 08:00	The Trip	07:30 - 08:15	The Trip
08:10 - 08:55	RPM	08:30 - 09:00	Sprint	08:45 - 09:15	Sprint
10:35 - 11:20	The Trip	09:15 - 10:00	The Trip	10:45 - 11:30	The Trip
13:15 - 14:00	RPM	10:30 - 11:00	Sprint	12:00 - 12:30	Sprint
14:15 - 14:45	Sprint	11:15 - 12:00	RPM	12:45 - 13:30	RPM
15:00 - 15:45	The Trip	12:15 - 12:45	Sprint	13:45 - 14:15	Sprint
16:00 - 16:30	Sprint	12:45 - 13:30	The Trip	14:30 - 15:15	The Trip
16:45 - 17:15	Sprint	13:45 - 14:15	Sprint	15:30 - 16:00	Sprint
18:30 - 19:00	Sprint	14:45 - 15:30	RPM	16:15 - 17:00	RPM
19:15 - 20:00	The Trip	15:45 - 16:15	Sprint	17:10 - 17:55	The Trip
20:15 - 20:45	Sprint	16:30 - 17:15	The Trip	19:00 - 19:45	The Trip
21:00 - 21:45	RPM	18:30 - 19:00	Sprint	19:45 - 20:15	Sprint
		19:10 - 19:55	The Trip	20:30 - 21:00	Sprint
		20:10 - 20:40	Sprint		
		21:00 - 21:30	Sprint		
TUESDAY 06:30 - 22:00		THURSDAY 06:30 - 22:00		SATURDAY 08:00 - 18:00	
06:35 - 07:20	The Trip	06:35 - 07:20	The Trip	08:15 - 09:00	The Trip
07:25 - 08:10	RPM	07:25 - 07:55	Sprint	09:15 - 09:45	Sprint
08:45 - 09:15	Sprint	08:00 - 08:45	RPM	10:00 - 10:30	Sprint
09:30 - 10:15	The Trip	08:50 - 09:20	Sprint	10:45 - 11:30	The Trip
10:30 - 11:00	Sprint	09:30 - 10:00	Sprint	11:45 - 12:15	Sprint
11:00 - 11:45	RPM	10:15 - 11:00	The Trip	12:30 - 13:00	Sprint
12:00 - 12:45	The Trip	11:15 - 11:45	Sprint	13:15 - 14:00	RPM
13:00 - 13:30	Sprint	12:00 - 12:45	RPM	14:15 - 15:00	The Trip
13:45 - 14:30	RPM	13:00 - 13:30	Sprint	15:10 - 15:55	RPM
14:45 - 15:15	Sprint	13:45 - 14:30	The Trip	16:15 - 16:45	Sprint
15:20 - 16:05	The Trip	14:45 - 15:15	Sprint	17:00 - 17:45	The Trip
16:15 - 17:00	RPM	15:30 - 16:00	Sprint		
17:15 - 18:00	The Trip	16:15 - 17:00	RPM		
19:15 - 19:45	Sprint	17:05 - 17:50	The Trip		
20:00 - 20:45	The Trip	19:00 - 19:30	Sprint		
		19:40 - 20:25	The Trip		
		20:30 - 21:15	RPM		
				SUNDAY 08:00 - 18:00	
				08:15 - 09:00	The Trip
				09:15 - 09:45	Sprint
				11:45 - 12:15	Sprint
				12:30 - 13:15	RPM
				13:30 - 14:15	The Trip
				14:30 - 15:00	RPM
				16:15 - 16:45	Sprint
				17:00 - 17:45	RPM

01793 825525

GRANGE
LEISURE

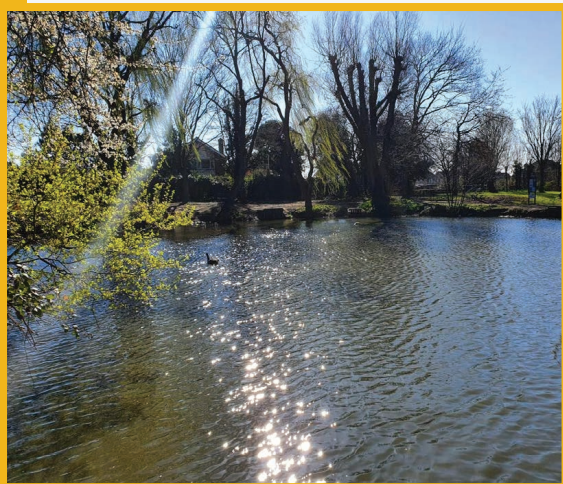
Parish News



Claridges Pond Fish Exclusion Zone

An upcoming project to create a permeable barrier in one corner of the fishing lake, creating a fish free zone where wildlife such as frogs, toads, dragonflies and water snails can live and breed.

This will give us 30 cubic meters of open water without any predatory fish. A great thanks is due to the Environment agency for their £3,000 grant to fund this important project.



A recent ecological survey, delivered for us by the private sector, discovered an incredibly rare species within the aquatic environment. However due to the voracious Carp within the pond that eat all living organisms, they aren't thriving as they potentially could.

Green Tench and Rudd recently added to the pond by the Environment Agency to increase fish diversity.

Stratton Scouts Tree Planting

Around 40 volunteers from Stratton Scouts, Guides, & Brownies attended a tree planting event with us at White Hart Allotments. Around 150 trees were planted during the day, each one 1.5metres tall already. Community work is part of what these groups enjoy doing and it was a pleasure to work in partnership with them for the day.



Fly-tipping

We deal with roughly 3 fly tipping events every month including the one pictured to the left. This costs the council about £10,000 annually in labour and tip costs.

Skate Park 2022

The Parish Council is currently undertaking extensive consultation with the general public to identify the demand for a skate park and to consider different design options including sites for locating one.

Our budget for this project is potentially around the **£85,000** mark with £10,000 coming from the National Lottery.

A public consultation is currently on display in our offices at Meadowcroft Community Centre for all to visit and comment on. Follow us on Facebook & Instagram for more information (@ssmpcswindon)

Our parish councillors will be canvassing doorways to get your opinions.



Meadowcroft Park Plans 2022

Due to some hefty funding coming from local housing developments in the Kingsdwon area, we have budget to spend on our park at Meadowcroft.

We are currently looking at widening and resurfacing the 360m tarmac path that goes all the way from Spur Way to Dockle Way. This path is in poor state currently.

We are also looking to extend our car park at our community centre by up to 32 spaces. This will alleviate the pressures put on the local area, especially on weekends, when the park is extremely busy with football club activity.

We are also looking to extend further the children's play area to provide more for both the very young and the older children.



Police update

Wiltshire and Swindon are split into eight Community Policing Team (CPT) areas, each of which have their own dedicated Inspector, Sergeant, Officers and Police Community Support Officers. But, do you know who your local officers are?

Meet The Stratton Team

Welcome to the Stratton Neighborhood Team. "We have recently been increasing foot and bike patrols throughout Stratton. Focusing on the local allotments and play parks, to ensure the community is safe. We have also been visiting the local schools regularly and keeping an eye on particular areas of interest to us."



SGT Poole



PC Deller



PCSO Riley



PCSO Muhammed



PCSO Xu



FAQ's



How is the Parish different to the Borough?

They differ due to their position in the local government hierarchy. A Borough has more authority and is responsible for planning, parking & environmental health. Whereas a Parish has less authority and our roles have more of an effect on the local community.

Do you clear fly tipping?

We are responsible for clearing all fly tipping from public land in the parish (landowners are responsible when it is on their private land)



Can you cut the trees outside our house?

That depends. Some belong to us and some belong to Swindon Borough Council. Please email us your number and we will call to discuss.

Will you clean the road & gullies in my street?

A very common request and is not a service we deliver. Swindon Borough are responsible for this and we work to encourage more street cleaning



How long is the allotment waiting list?

Around 1-2 years. Please contact us if you would like to be added to the list!

Can I buy a grave if I live outside the parish?

Unfortunately, no. We have limited grave space and parish residents are our priority. You must live within Stratton Parish boundaries when purchasing a plot.



Did you know?



Reverend Carol Stone (illustrated above) was the UK's first transgender vicar, who served as priest and chaplain at St Phillips Church in Stratton. She said she had two vocations in life: one was to be a priest and the other was to be a woman.

Stratton derives its name from the Latin, strata (meaning a paved way or street) after the Roman road which runs straight through the parish from south east to north west.

In the past, the people of Stratton were commonly known as 'crocodiles'. The name came from a local story that some Stratton men once armed themselves against a supposed crocodile found at the side of a road. It turned out to be a scarf.

Stratton St Margaret is one of the largest Parish Councils in the UK with a population of around 23,000.

Council Meetings

2022 Meetings

Date	Event	Start
April 2022		
6 April	Property Management	7pm
13 April	Planning & Highways	7pm
20 April	Personnel	7pm
27 April	Annual Assembly	7pm
May 2022		
4 May	Full Council	7pm
11 May	Open Spaces	7pm
18 May	Planning & Highways	7pm
June 2022		
15 June	Planning & Highways	7pm
22 June	Personnel	7pm
July 2022		
6 July	Property Management	7pm
13 July	Planning & Highways	7pm
20 July	Full Council	7pm
27 July	Finance	6pm

Date	Event	Start
Aug 2022		
24 Aug	Planning & Highways	7pm
31 Aug	Open Spaces	7pm
Sept 2022		
14 Sept	Personnel	7pm
21 Sept	Planning & Highways	7pm
28 Sept	Full Council	7pm
Oct 2022		
5 Oct	Finance	6pm
12 Oct	Property Management	7pm
19 Oct	Planning & Highways	7pm
Nov 2022		
2 Nov	Open Spaces	7pm
23 Nov	Planning & Highways	7pm
30 Nov	Full Council	7pm
Dec 2022		
7 Dec	Personnel	7pm
14 Dec	Planning & Highways	7pm
21 Dec	Finance	6pm

Stratton St Margaret Parish Council is committed to making local government open and accessible. All of our meetings are open to the public and press and are held in Meadowcroft Community Centre, Addison Crescent, Swindon, SN2 7JX. With the exception of the Annual Assembly which is due to be held at Grange Leisure Centre, Grange Drive, Swindon SN3 4JY. Before every meeting the Agenda can be viewed on our noticeboards

at Meadowcroft Community Centre, Beechcroft Library and Grange Leisure Centre (as well as on our website). All minutes are uploaded on the website.



Useful Numbers

Beechcroft Library	01793 680030
Community Centre	01793 823761
DGS Autos	01793 700220
Dobbies	01793 822224
Drove Vets	01793 821821
Fazes hair	01793 823435
George Scarrot Fun Fair	07769 267911
Grange Leisure	01793 825525
Infiniti hair & nails	01793 834010
Limesquare Vehicle Rental	01793 435605
Lister Wilder	01285 708234
Merchiston Surgery	01793 823307
Michaels Workwear	01793 614721
MV Cleaning	01793 46932
Open Spaces	07825 137703
Orchard Press	01793 420642
RJ Estate Agent	01793 831444
The Den	01793 722299
The Pest Controller	07557 023940

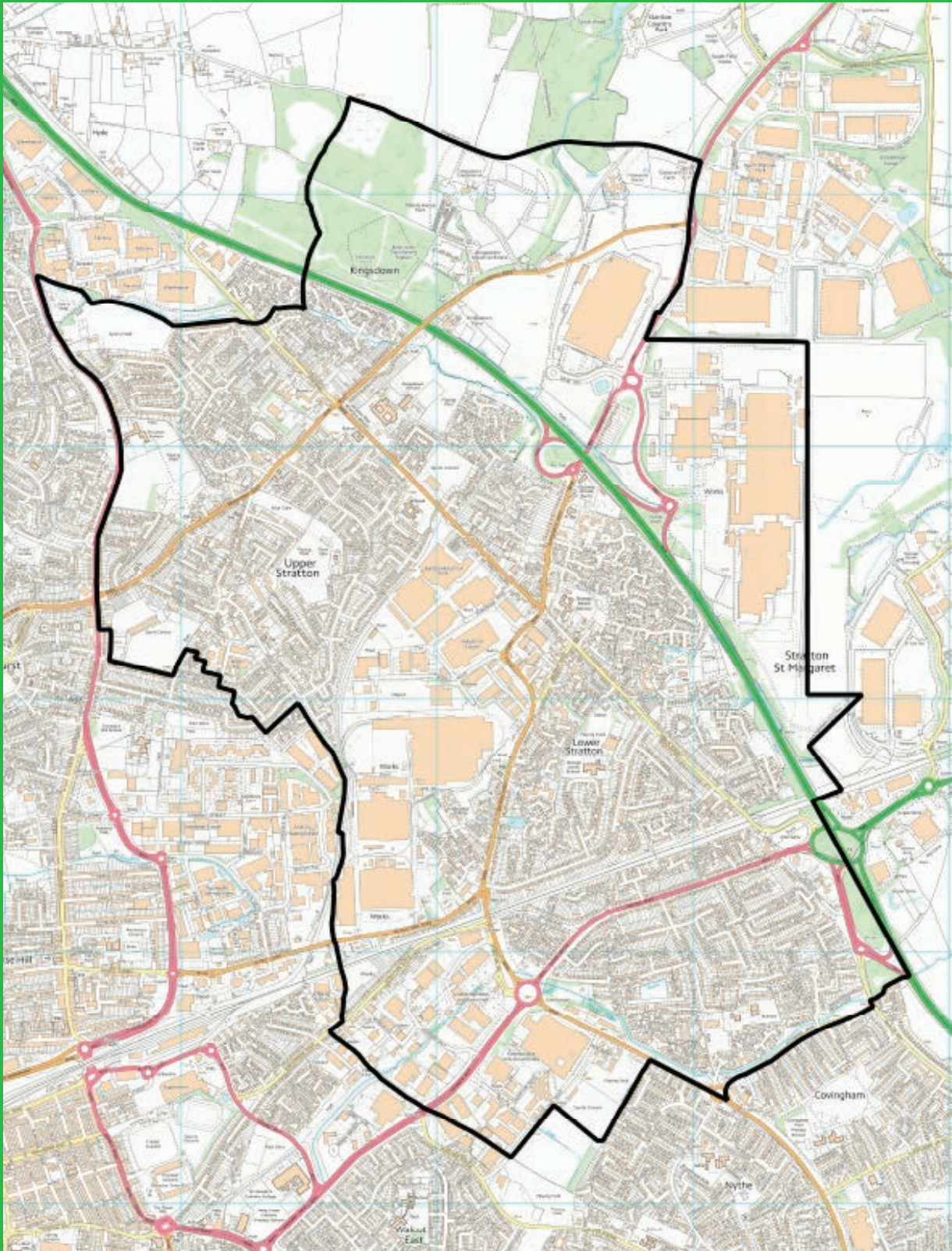
Arkells Brewery	01793 823026
Goodys Bakery	07817 265498
Kingsdown Inn	01793 824802
The Bakers Arms	01793 832227
The Crown Inn	01793 827530
The Dockle	01793 838910
The Messenger	01793 524838
The New Inn	01793 822081
The Rat Trap	01793 823282
The Wheatsheaf	01793 823149
The White Hart	01793 822272

Beechcroft Infants	01793 700220
Beechcroft Infants	01793 823278
Colebrook Junior	01793 823057
Grange Infants	01793 823278
Grange Junior	01793 823278
Kingsdown	01793 822284
Ruskin Junior	01793 332107
St Catherines Primary	01793 822699
St Lukes Academy	01793 705566





Stratton St Margaret
Parish Council



Serving the Community since 1894