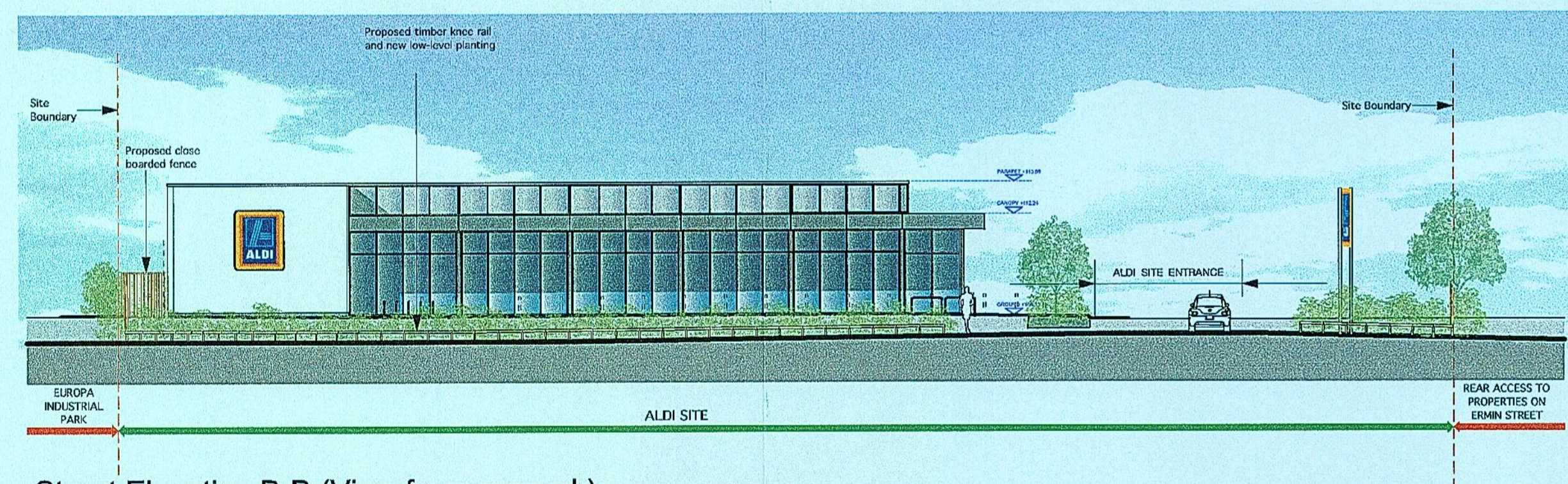
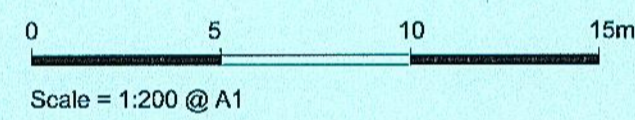
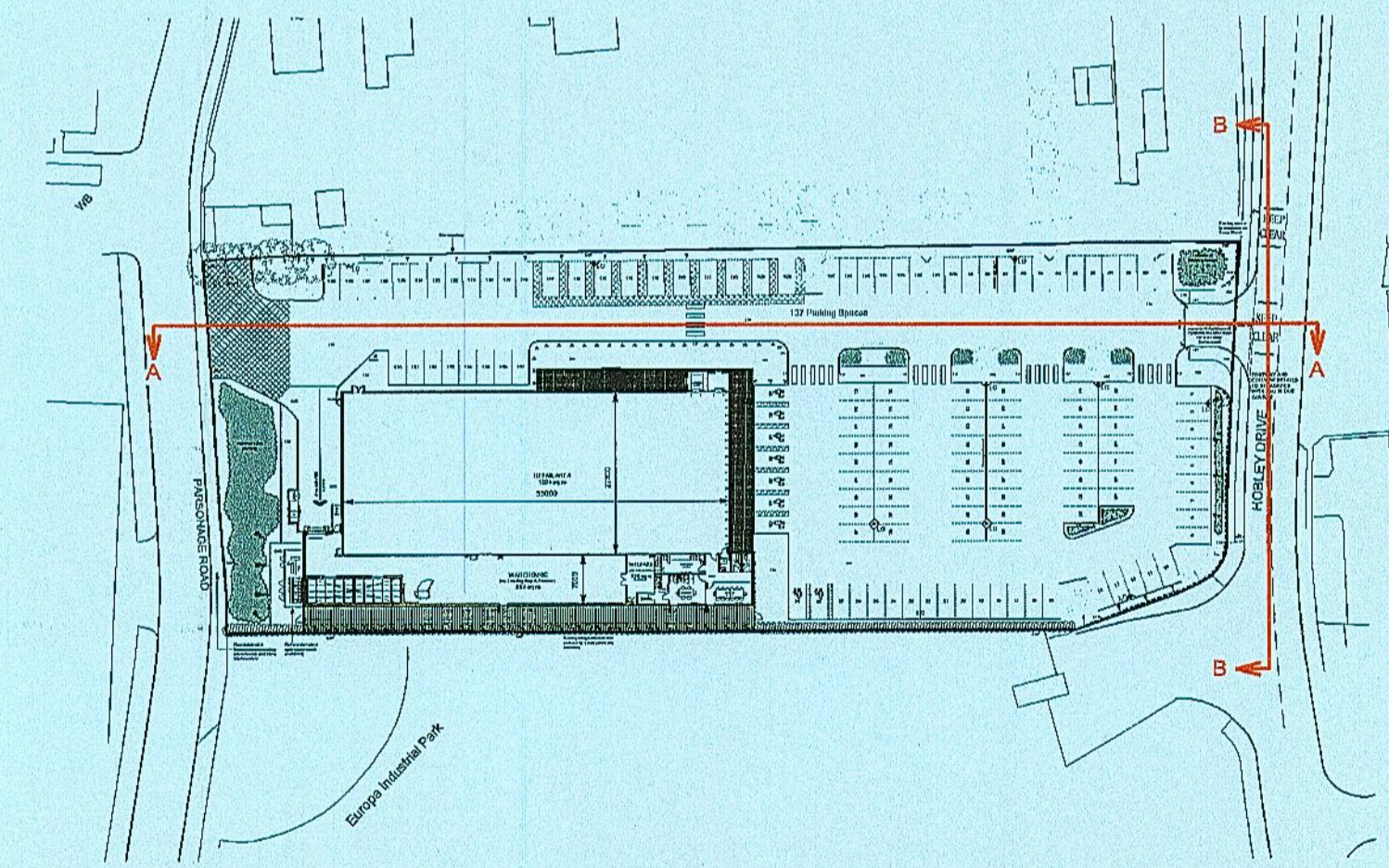
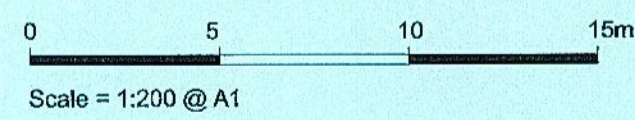




Street Elevation A-A (View from Hobley Drive) Scale 1:200 @ A1



Street Elevation B-B (View from car park) Scale 1:200 @ A1



Kendall Kingscott

Chartered Architects
Chartered Building Surveyors
Interior Designers
CDM Co-ordinators
Glenworth Court, Lime Kiln Close
Stoke Gifford, Bristol BS34 8SR
+44 (0)117 931 2082
www.kendallkingscott.co.uk

Project:
ALDI Stores,
Hobley Drive, Swindon
Client:
ALDI Stores Ltd

Swindon Borough Council
Planning Department
- 8 JUL 2015
Rev. Date By Note
S151028

Proposed Street Elevations

Project No. 131017 P(1)07

Scale: 1:200 A1 Elevations and Sections.vvx
Date: 12/15
Drawn: HB
Checked: JB
Status: PLANNING

Only to be used on the site for which designed. The accuracy of design information contained in this drawing is limited not only to the User's risk and Kendall Kingscott Ltd. will have no liability for any errors or omissions arising hereon. The production of amended or updated information from the said design information by the User is entirely the responsibility of the User and Kendall Kingscott Ltd. shall however remain responsible to represent their relationship.