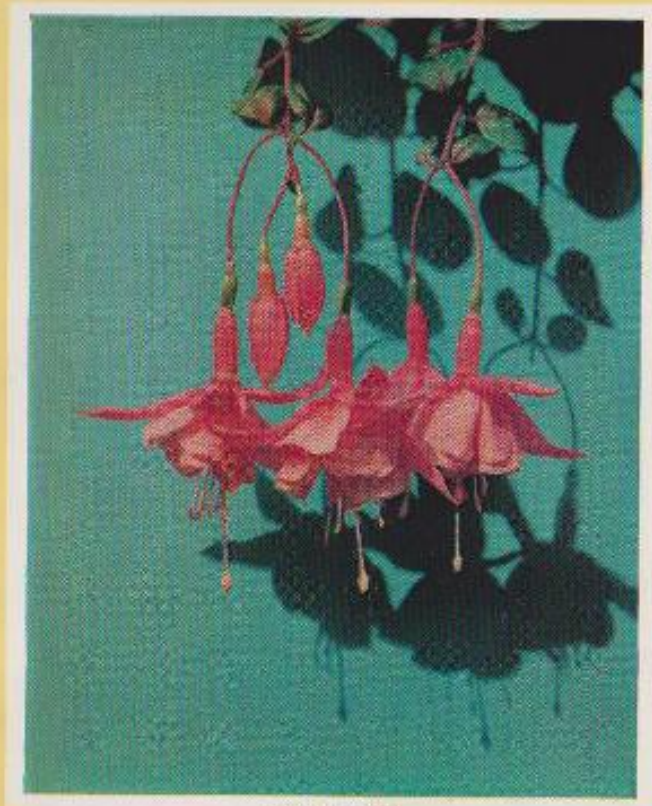


Gold Medal
FUCHSIAS



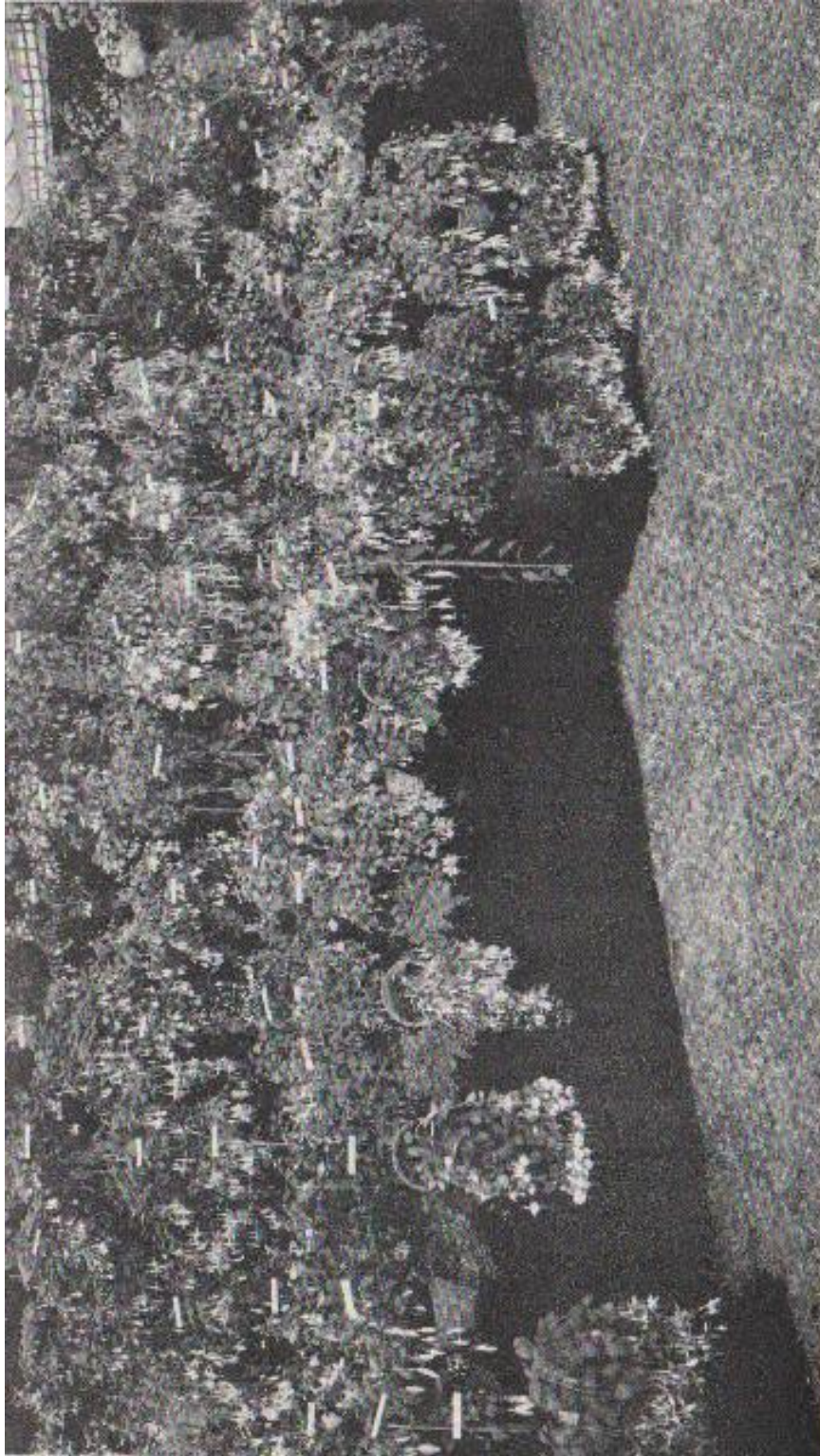
PINK GALORE

JOHN BLACKWELL

Kingsdown Nurseries

KINGSDOWN · SWINDON · WILTS.

TELEPHONE: STRATTON ST. MARGARET 2224



AN EXHIBIT OF OURS AT THE ROYAL SHOW FOR WHICH THIS YEAR AT CAMBRIDGE WE RECEIVED A GOLD MEDAL.

NEW AMERICAN INTRODUCTIONS

ONLY PLANTS EX. 2½in. POTS—7/6d. EACH

- ADAGIO.** (Tiret). Large semi-double, flare; red corolla with rosy red sepals. Can be used as bush or trailer.
- BLUE LAGOON.** (Tiret). Huge double upright with medium blue corolla and rosy red sepals. Corolla heavily veined.
- BELVEDERE.** (Reedstrom). Very large double, corolla pale blue, mottled dark pink. Sepals dark pink to red. A strong, upright bush. It was awarded the Leo Lee Memorial Award for the best un-introduced seedling at the California National Fuchsia Society Show at Los Angeles in 1959.
- B. BLUE BUTTERFLY.** (Waltz). A medium to large semi-double trailer, distinctly different. Short tube and long white sepals, corolla a deep violet blue, splashed with white.
- BLUE 'N' WHITE.** (Berkeley). Large double spreading, corolla lilac blue, outer smaller petals overlaid phlox pink. White sepals are tinted blush.
- CAPRI.** (Schabel-Paskesen). The corolla of the huge, 100-petaled blooms is a deep rich blue-violet. Broad, lobular sepals are glistening white.
- COSMOPOLITAN.** (Castro). Corolla very large blooms with flaring white veined pink petals. Sepals draped salmon.
- CURLY Q.** (Kennett). Trailer, bush or ground cover. Single. Corolla, four rolled petals of violet-purple, small sepals, pale carmine, reflex perfectly into circles which contrast against the tube.
- CURTAIN CALL.** (Munker). Double corolla has serrated edges and colour ranges from deep rose bengal on centre petals to crimson on outer ones. Carmine sepals.
- B. CREAM PUFF.** (Kennett). Trailer, double, fine-stemmed. Corolla, large blooms of pink and white, borne on long pedicels; frilled, creamy-white with delicate pink overlay on outer petals. Sepals, tube long, slender, slightly curved pale pink, becoming white at tips.
- DANNY BOY.** (Tiret). The huge, double corolla with pale red sepals in same tone, makes a striking show of colour. Plant is a strong upright.
- DIABLO.** (Tiret). Effective contrast of large double burgundy red corolla with pure white sepals. Very showy trailer or bush.
- B. DUSKY ROSE.** (Waltz). A large, double, natural trailer. The medium sized tube and long sepals which curl at tips are a clear deep coral pink. Corolla, a lovely shade of rose with coral pink splashes. As flower matures, colour changes to a raspberry rose shade and opens into a fluffy ruffled bloom. Foliage medium sized, dark green.
- FREEDOM.** (Martin). Corolla, medium size of dark blue, marbled with red and white, giving it a red, white and blue effect. Sepals, bright red. D.

- FLAIR.** (Tiret). The large open double corolla is a lovely shade of raspberry pink, with white sepals. May be used as semi-trailer or hanger. Beautiful colour. S.D.
- FANCY PANTS.** (Reedstrom). Corolla opens a double purple, fading to magenta. Sepals are bright red.
- B. FIERY SPIDER.** (Munkner). Single, corolla crimson with decided orange flush; long thin tube deep carmine. Long narrow sepals, pale salmon, tipped light green.
- FLORENTINA.** (Tiret). Semi-trailer, with long tapering buds, opening into large, double smokey Burgundy red corolla. Well recurved sepals are frosty white.
- B. FIREBALL.** (Waltz.) A large, double naturally trailing variety that is unusual for its many colour changes. The short tube and broad upturned sepals are bright carmine-tipped green. The buds and corolla are a ruddy purple with splashes of carmine at base of petals as flower matures. Some petals turn a dark bluish purple, which again change into a red of great brilliancy.
- GREAT SCOTT.** (Tiret). Very large double Jasper red corolla, with vermilion markings. Carmine rose sepals. A stiff, upright grower and heavy bloomer. This is going to be liked over here.
- KEEPSAKE.** (Kennett). Corolla, medium dianthus purple. Sepals, white, flushed pink beneath. D.
- LILAC LUSTRE.** (Munkner). Double corolla, in a most attractive powder blue or lustrous lilac. Sepals rose red.
- LUSCIOUS.** (Martin). Corolla, dark wine and red, marbled with orange. Sepals, dark red. D.
- MANTILLA.** (Waltz.) Trailer with soft willowy branching growth. Bronze foliage. The flowers are deep carmine. Tubes 3 inches in length. The petals are spreading with pagoda-like sepals. Free bloomer. Over here we find it more orange. One of the finest.
- MARILYN.** (Martin). Corolla, white and very compact, with petaloides at the corner of each sepal. Has an oval shape. Sepals, broad and pink. D.
- MISS WASHINGTON.** (Mouncer). Sport of Fort Bragg. Corolla is double white. Sepals rose red.
- MARIETTA.** (Waltz). Sepals are bright carmine. Corolla a dark magenta red. Has a few splashes of carmine on outer petals.
- MIDNIGHT SUN.** (Waltz). Sepals pink outside, underside a bright carmine. Corolla very dark burgundy purple. Splashes of carmine and salmon pink at base of sepals. D.
- MORNING LIGHT.** (Waltz). Sepals are snowy white outside, flushed palest pink underside. Corolla double, deep lavender blue. Foliage an attractive shade of light green.
- MIDGE.** A little gem, stem and small broad recurved sepals are flushed pink outer side, deeper pink underside. Corolla fully double, a lovely shade of clear silver blue. Plant is self-branching with small dark green foliage. In two years has only grown a foot high. Introduced by Muriel Waltz, for Mr. J. W. Farrington, of Alameda.

NOBILITY. (Martin). Corolla, very light blue to orchid pink. Sepals, dark red. D.
NIAGARA. (Schnabel-Paskesen) Double corolla is rose veined on a clear white base. Sepals thick and granular white, with very pale pink edges, flushed pale green.

NIGHTINGALE. (Waltz). A large, frilly double natural trailer, our first of the tri-coloured varieties. The short tube and sepals are white, flushed pink; centre of corolla a deep purple. As flower matures, centre of corolla turns a bright magenta with outer petals of pink and white and coral tones.

PINK CLOUD. (Waltz). Long wide upturned pink sepals curl slightly at tips; buds are long and pointed. The corolla has four overlapping petals of clear pink, flaring at maturity. S.



RED RIBBONS

PINK FLAMINGO. (Castro). Corolla, very long, pale pink to dark pink, veining from base. Sepals, dark pink, that curl into various shapes, giving an effect of flamingos. S.D.

PREMIERE. (Castro). Corolla violet, with red marbling. Sepals, carmine. D.

PELORIA. (Martin). Upright, double. Corolla, large star shaped, purple in centre and red petals on outer side. Sepals, large, dark red.

PINK FAVOURITE. (Tiret). This is strictly a pot or border plant. The large, deep pink flowers are as big as "Angela Leslie," but are a shade lighter in colour. Mr. Tiret has grown this plant in his yard for the last three years, and even though the plant is only 15in. high, every year it is loaded with flowers.



ANGELS FLIGHT

- PINWHEEL.** (Waltz). Flower resembles a pinwheel in form. Pink sepals. Corolla, a lovely shade of violet has folded petals which open wide in centre. D.
- PINK DELIGHT.** (Waltz). Sport of the beautiful fuchsia *Greenivere*. Tube and long frosty gracefully curved sepals are white, flushed palest pink. Corolla has overlapping petals of clear pink with lavender undertones, fading a deeper shade as flower matures. S.
- B. QUEEN OF HEARTS.** (Kennett). Corolla, the four centre petals of violet-purple are surrounded by many petaloids of a lighter carmine pink. Sepals, carmine. D.
- RED BUTTONS.** (Hodges). Single orange red corolla and outspread long-pointed orange-red sepals.
- RED RIBBONS.** (Martin). Trailer, with double stark white corolla and extra reddish red sepals that curl up to form a bow. Sepals form the main blossom effect. S.
- B. RAMBLING ROSE.** (Tiret). Corolla and sepals are soft rose. An exceptionally heavy bloomer in a colour not previously found in trailing fuchsias. D.
- B. RUFFLES.** (Erickson). Distinctly ruffled, double and spreading corolla deep violet, small outer petals marbled pink with noticeably long stamens. Short, waxy tube with broad upturned sepals, deep pink, tipped green.
- SLEIGH BELLS.** (Waltz). All white, beautiful single flower. Has long, thin, pointed upturned sepals tipped green, and a slim white tube. The single corolla forms itself into a perfect bell. Ideal espaliered, can also be grown as a bush. This is undoubtedly the single white we have been waiting for over here.
- 'S WONDERFUL.** (Castro). Upright or semi-trailer, double. Corolla, medium double, inner petals pale lavender; outer petals orchid pink. Sepals, pink, very colourful.
- SUNDOWN.** (Castro). Corolla, large dark lavender with dark pink streaks emerging out of the base of the sepals, running into the petals. Sepals, red. D.
- SONATA.** (Tiret). Large, double, clear white corolla, with pink sepals. Upright grower. This fills the need for a large, sturdy pink and white that can "take it."
- SNOWBALL.** Large white double. Corolla, creamy white and very double. Tiny flush of pink at base if in sun. Sepals, long and reflexed. Vigorous grower, but needs moist conditions in warmish shade, with good drainage. A gorgeous flower.
- STRAWBERRY SUNDAE.** (Kennett). Extremely double, bright strawberry pink corolla. Sepals, waxy ivory, white tipped with green. Foliage is small, compact medium green leaves.
- STARLITE.** (Waltz). A large, double semi trailer or upright. Tube and broad pointed sepals are a new smoky rose shade. Corolla, a deeper shade of lilac rose opens into a square shaped flower, with a star-like centre.
- TEMPTATION.** Upright, single flower with lilac to rose coloured bell-shaped corolla, with coral sepals turning back against the stem.

- TOPAZ.** (Kennett). Corolla, violet-purple centre petals, with topaz marbling, medium size. Outer petals coral and topaz marbling, with violet. Sepals, light coral. D.
- B. TAFFY.** (Martin). Corolla, several shades of pink. Sepals, long pink. Very colourful and different. S.
- THE FRANCISCAN.** (Schnabel-Paskesen). Pink, medium-sized flaring flowers having a rich, flowing quality. A fully double corolla, faintly rose veined, set off by broad granular sepals, perfectly matching the bright pink corolla.
- TUTTI-FRUITTI.** (Schnabel-Paskesen). Magenta rose. Reflexed pale pink granular sepals. The four centre petals are well defined while the many auxiliary petals are etched and marbled with rose pink. D.
- B. TIFFANY.** (Reedstrom). Large double, pure white corolla with up-turned sepals, palest pink. Upper side of sepals white.
- B. TEXAS LONGHORN (Fuchsia-La).** Tube and long outspreading sepals are bright red, the single to semi-double corolla clear white.
- WARPAINT.** (Kennett). Corolla, dianthus purple with coral-pink marbling, fading to reddish-purple. Sepals, white. D.
- B. WAIKIKI.** (Tietz). Trailer, with large double red corolla and recurving sepals of white, flushed pale pink. A beautiful trailer for every collection.
- WHIRLAWAY.** (Waltz). A large, semi-double natural trailer. Has short, greenish tube and the extra long sepals are white, tipped green, with splashes of pink at base of bud. The buds carried on extra long stems open soft milky white and sepals flare out in novel fashion, then curl up and under. Corolla develops a delicate blush pink tinge as flower matures. Branches are long and willowy with medium size foliage. By pinching back well you can have a show basket as flowers bloom along the stem as well as the tips. This is one that everybody will buy. Probably the heaviest booked fuchsia in our show groups this year.
- YUM YUM.** (Erickson). Rose pink with orchid undertone. Sepals, light pink, tube and outside of sepals flushed green. D.

NEW INTRODUCTION

HIGHLAND BEAUTY. Sepals dawn pink, overlaid neyron rose, apices green, slightly recurved. Corolla double amethyst violet, tinged pink flush when young; fuchsia purple when older. Winner of 2nd prize for new seedling, British Fuchsia Societies Show, 1960. We have pleasure in introducing this on behalf of Mr. W. D. Clark, the well-known exhibitor and grower, of Camberley, Surrey.

Plants only 5/-

OUR OWN NEW INTRODUCTIONS, 1962

PLANTS ONLY EX. 2½in. POTS—5/- EACH

LONELY BALLERINA. Sepals dark carmine. Corolla fully double, flushed and veined carmine.



PATHEIQUE



WOOD VIOLET



COACHMAN



THE ARISTOCRAT



CHINA LANTERN



PINK QUARTET

FORGOTTEN DREAMS. Large reflexing sepals of a coral shade with deeper markings. Corolla, double dusky purple. Unusual colour combination. Shown at Southport this year for the first time and was very well received.

ENGLISH AND CONTINENTAL

P. R.C.

ABBE FARGES. S.		
Light Cerise. C.		
Rosy Lilac. Small.		
free flowering.		
S.D.	1/10	11d.
ALFRED RAMBAUD. S.		
Scarlet.		
C. Violet-purple.		
D.	1/10	11d.
AMELIE AUBIN.		
S. White. C. Rosy-		
Carmine. S. . .	1/10	11d.
AMY LYE. S.		
White. C. Coral-		
orange. S. . .	2/3	1/3
ANDREW CARNEGIE. S.		
Crimson.		
C. White veined		
cerise. D. . . .	1/10	11d.
ATHELA. S. Rose.		
C. Cerise to		
orange-salmon. S.	1/10	11d.
B. BALKON. S. Light		
pink. C. Deeper		
pink. Small free-		
flowering. S. . .	1/10	11d.
BALLET GIRL. S.		
Cerise. C. White		
veined cerise. D.	2/3	1/3
BEAUTY OF SWANLEY. S.		
White tinted pink.		
C. Pale pink. S.	1/10	11d.
BELLA FORBES.		
S. Cerise. C.		
Creamy white. D.	1/10	11d.

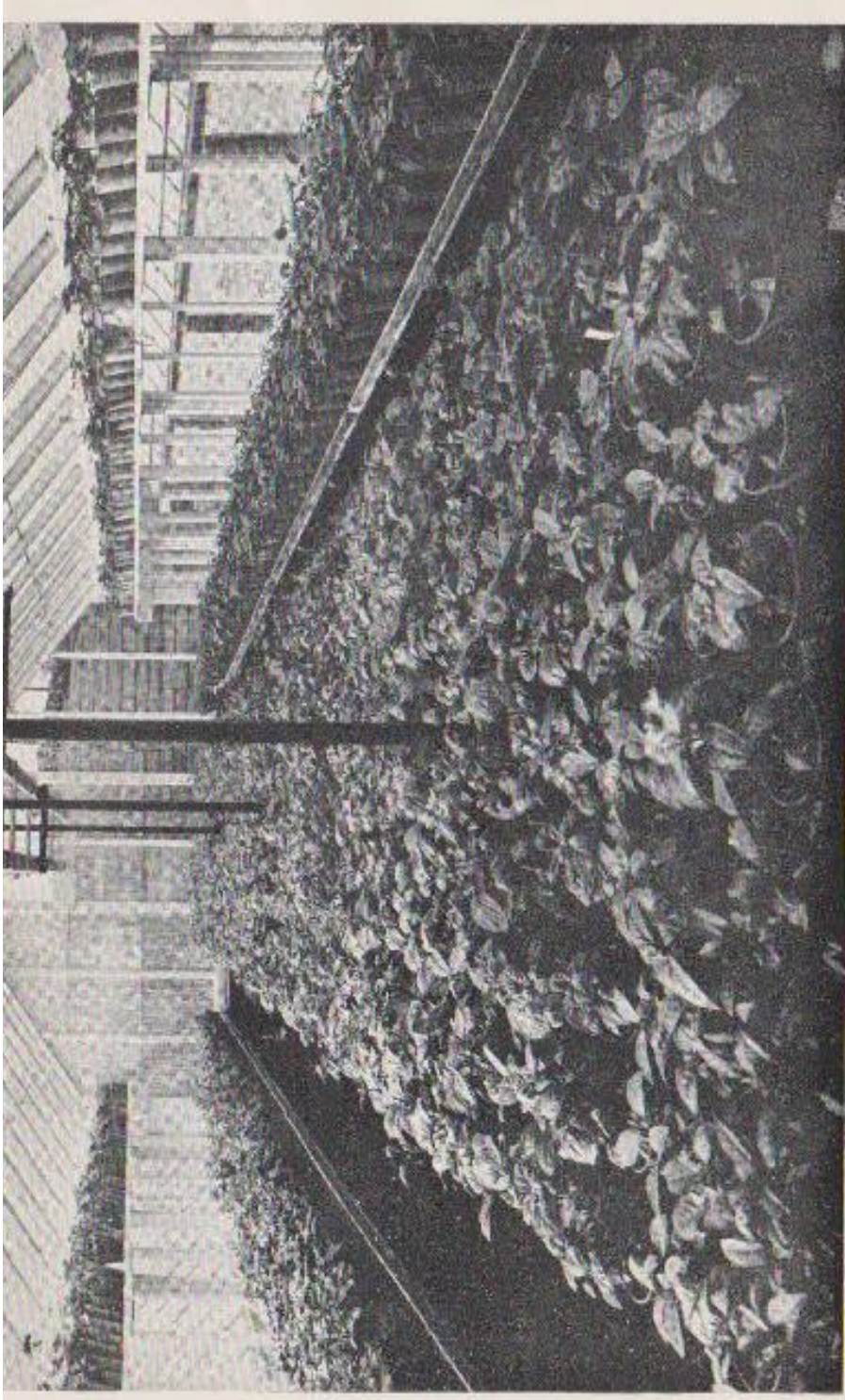
P—Plants; R.C.—Rooted Cuttings.

	P.	R.C.
BERLINER KIND —S. Scarlet. C. White. D.	1/10	11d.
BLUE GOWN —S. Cerise. C. Violet-blue. D.	1/10	11d.
BON ACCORDE —S. White. C. Pale purple. Small free-flowering. S.	1/10	11d.
BRILLIANT —S. Scarlet. C. Violet-magenta. S.	1/10	11d.
B. BURNING BUSH —S. Scarlet. C. Purple. Foliage, golden, bronze and red. S.	2/-	1/-
CADMUS —S. Carmine. C. White. S.	1/10	11d.
CLOTH OF GOLD —S. Scarlet. C. Purple. Golden Foliage. S.	1/10	11d.
COACHMAN —S. Salmon. C. Orange Vermilion. S.	2/-	1/-
CONSPICUA —S. Scarlet. C. White. S.	1/10	11d.
CONSTANCE —S. Pale pink. C. Pale purple. S.	1/10	11d.
COUNTESS OF ABERDEEN —S. White. C. White to palest pink. Dwarf, small free flowering. S.	2/3	1/3
B. COXEEN —S. White, tube carmine. C. Bluish-pink. S.	1/10	11d.
CUPID —S. Pale cerise. C. Bluish magenta. Small free flowering. S.	1/10	11d.
DAINTY LADY —S. Cerise. C. Bluish-white veined cerise. S.D.	1/10	11d.
DANTE —S. Red. C. Fiery purple. S.D.	1/10	11d.
DR. TOPINARD —S. Rosy pink. C. White. S.	2/6	1/6
DUCHESS OF ALBANY —S. Pale rose. Tube white. C. Pink. S.	1/10	11d.
EARL OF BEACONSFIELD —S. Pale carmine. C. Vermilion. S.	1/10	11d.
B. EVELYN LITTLE —S. Rose pink. C. Lilac pink, flushed magenta. S.	1/10	11d.
FANTASIE IMPROMPTUE (BLACKWELL) —S. Carmine. C. Violet veined carmine	2/6	1/6
FASCINATION —S. Red. C. Rose-pink. D.	2/3	1/3
FLAME —S. White. C. Light Flame. S.	1/10	11d.
GEN. WAVELL —S. Pale cerise. C. Salmon-magenta. D.	1/10	11d.
GLADIATOR —S. Deep pink. C. White, flushed pink. D.	1/10	11d.
GLOIRE DE MARCHE —S. Cerise. C. White veined cerise. D.	1/10	11d.
GOLDEN TREASURE —S. Scarlet. C. Purple-magenta. Golden yellow foliage. S.	1/10	11d.
GUSTAVE DORE —S. Pink. C. White. D.	1/10	11d.
HERON —S. Scarlet. C. Blue, veined cerise. S.	1/10	11d.

P—Plants; R.C.—Rooted Cuttings

	P.	R.C.
HIDCOTE BEAUTY —S. White, green tips, C. Pale salmon pink, S.	2/3	1/3
LEVERKUSEN —Cerise self, Triphylla type, S.	1/10	11d.
LUSTRE —S. White, C. Bright pink, S.	1/10	11d.
LOVELINESS —S. White, C. Rosy cerise, S.	1/10	11d.
MARINKA —S. Red, C. Little deeper, S.	1/10	11d.
MAUVE BEAUTY —S. Cerise, C. Mauve, D.	2/3	1/3
MME. DANJOUX —S. Cerise, C. Violet-pink, D.	1/10	11d.
MME. JULES CHRETIEN —S. Cerise, C. White veined cerise, D.	1/10	11d.
MME. VAN DER STRASSE —S. Bright cerise, C. White, flushed and veined pink, D.	1/10	11d.
B. MOLESWORTH —S. Cerise, C. White, D.	1/10	11d.
B. MOONLIGHT SONATA (BLACKWELL) —S. Bright pink, recurved, C. Light purple, flushed and veined pink at base, S.	1/10	11d.
MR. GLADSTONE —S. Cerise, C. Blue-mauve, D.	1/10	11d.
MONUMENT —S. Crimson, C. Deep purple, D.	1/10	11d.
MRS. CHURCHILL —S. Cherry red, C. Pale pink, veined cerise, S.	1/10	11d.
B. MRS. RUNDLE —S. Pale rose, C. Orange vermillion, S.	1/10	11d.
O SOLE MIO (BLACKWELL) —S. Deep red, C. Deep purple, Flecked pink at times,	2/6	1/6
PATHETIQUE (BLACKWELL) —S. Dark red, C. White, veined carmine	2/6	1/6
PENELOPE —S. White, C. Pink, S.	1/10	11d.
PHENOMENAL —S. Scarlet, C. Deep violet purple, D.	1/10	11d.
PHYLLIS —S. Rose, C. Deeper rose, S.D.	1/10	11d.
PINK BALLET GIRL —S. Cerise, C. Lilac pink, D.	3/-	2/-
PINK PEARL —S. Pale pink, C. Deeper pink, S.D.	1/10	11d.
PORT ARTHUR —S. Carmine, C. Blue, D.	1/10	11d.
PRELUDE (BLACKWELL) —S. Red, C. Purple-magenta, S.	1/10	11d.
PRESIDENT ROOSEVELT —S. Red, C. Deep violet purple	1/10	11d.
PRINCE OF ORANGE —S. Orange pink, C. Orange salmon, S.	2/3	1/3
PRINCESS DOLLAR —S. Cerise, C. Purple, D.	1/10	11d.
QUEEN MARY —S. Pale rose, C. Rose, S.	1/10	11d.
B. ROLLA —S. White and pale pink, C. White, D.	2/3	1/3
ROSE OF CASTILE IMPROVED —S. Flesh pink, C. Violet purple, S.	1/10	11d.

P—Plants; R.C.—Rooted Cuttings.



A HOUSE OF PLANTS IN 3/4-INCH POTS BEING GROWN FOR SHOW AND STOCK

	P.	R.C.
ROSE PHENOMENAL —S. Scarlet. C. Rosy lilac. D.	2/3	1/3
SNOWCAP —S. Red. C. White. S.D.	1/10	11d.
SWANLEY YELLOW —S. Orange pink. C. Orange ver- million. S.	3/6	2/6
THE DOCTOR —S. Rose. C. Rosy-salmon. S.	1/10	11d.
WHITE PHENOMENAL —S. Scarlet. C. White veined cerise. D.	1/10	11d.

TRIPHYLLA HYBRIDS

GARTENMEISTER BONSTEDT —Orange Scarlet	1/10	11d.
H. HENKEL —Salmon Rose	1/10	11d.
MARY —Scarlet.	1/10	11d.
THALIA —Orange Scarlet.	1/10	11d.
TRAUDSCHON BONSTEDT —Salmon.	1/10	11d.

HARDY VARIETIES

ALICE HOFFMAN —S. Cerise. C. White. Small free flowering. S.
BRUTUS —S. Cerise. C. Dark purple. S.
CHILLERTON BEAUTY —S. Pink. C. Violet-mauve. S.
CORALLINA —S. Scarlet. C. Deep purple. S.
ENFANTE PRODIGUE —S. Cerise. C. Purple. S.D.
H. G. BROWN —S. Scarlet. C. Indian Lake. S.
LENA —S. Flesh. C. Orchid purple. S.D.
MARGARET BROWN —S. Rose pink. C. Rose bengal. Small free flowering. S.
MEDITATION (BLACKWELL) —S. Red. C. Creamy white, veined cerise. Medium size, free flowering, does well under glass.
MME. CORNELISSEN —S. Scarlet. C. White. S.D.
MRS. POPPLE —S. Scarlet. C. Purple. S.
TOM THUMB —S. Crimson. C. Mauve purple. S.

Prices of Hardy Varieties.

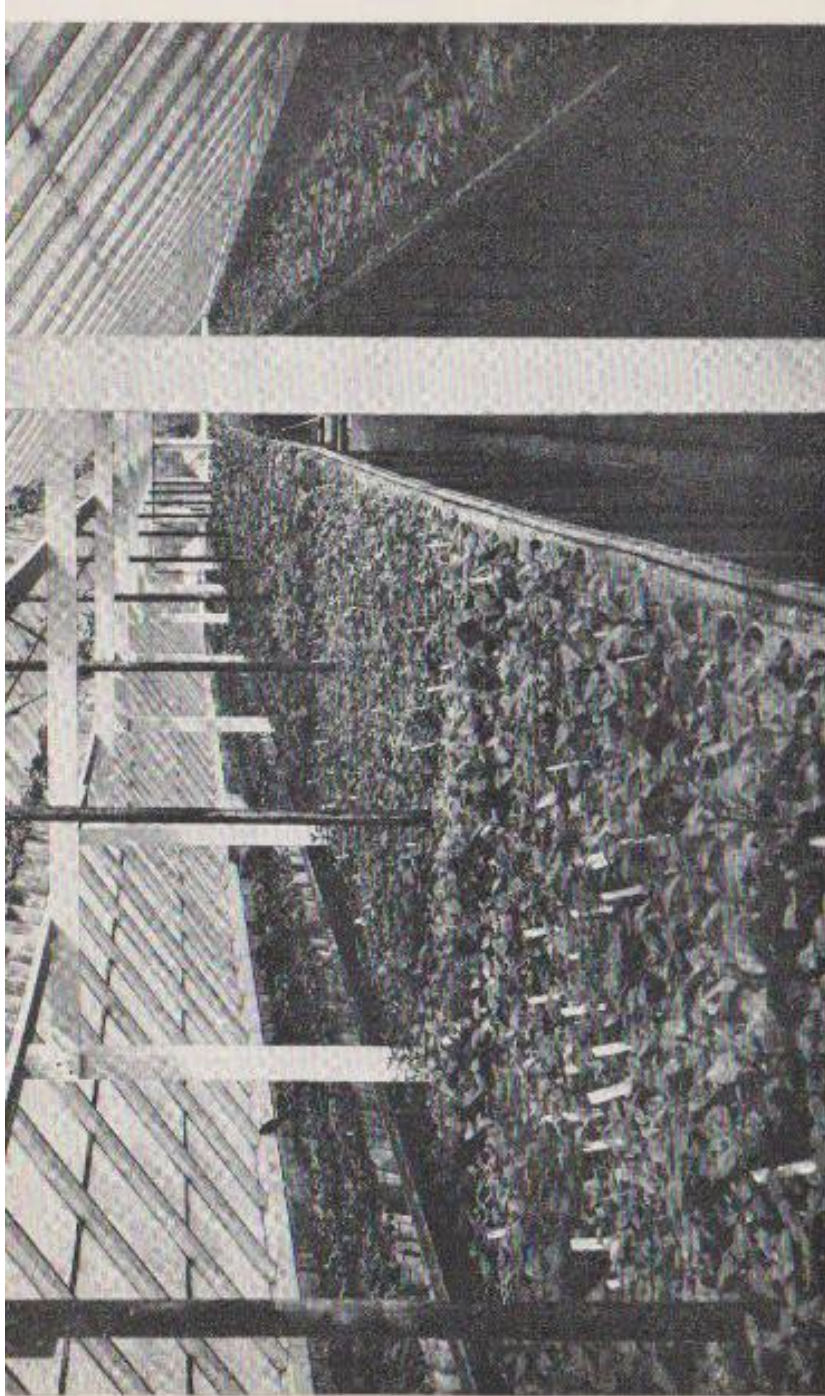
Plants from pots only 2/6d. each.

P—Plants; R.C.—Rooted Cuttings.

AMERICAN INTRODUCTIONS

	P	R.C.
ANGELA LESLIE. Upright. Very large double corolla of deep pink, well recurving medium pink sepals, tipped pea green	3/6	plants only
B. ANGELS FLIGHT. Long white tube, pink sepals which turn back the full length of the tube. Double corolla has white centre petals and shorter side skirt petals	3/6	plants only
ARMY NURSE —S. Deep carmine. C. Violet blue flushed pink. S.D.	1/10	11d.
BERNADETTE —S. Pale rose. C. Veronica blue. D.	1/10	11d.
BLUE PETTICOAT —S. White, pink inside. C. Silvery blue lavender. D.	1/10	11d.
BLUETTE —S. Red. C. Lilac blue. Small free flowering. S.	1/10	11d.
BLUE WAVES —S. Neyron rose. C. Deep Campanula violet, nicely waved. D.	2/-	1/-
BOBOLINK —S. Flesh pink. C. Blue violet. D.	1/10	11d.
BRANDS 500 CLUB —S. Salmon. C. Carmine orange	1/10	11d.
BRIDESMAID —S. White sepals, flushed carmine. C. Lilac orchid. D.	2/-	1/-
B. BRIGADOON. Broad sepals pink. Corolla violet blue, overlaid and marbled near base and on outside petals with fuchsia pink	3/6	plants only
B. BUBBLE HANGER —S. Pink. C. Soft rose. S.	1/10	11d.
CANDLELIGHT. Rose corolla, with petals dark purple lilac. Sepals pure white.	3/6	plants only
B. CASCADE —S. White tinted carmine. C. Deep carmine. S.	2/-	1/-
CHANG —S. Orange to brick-red. C. Deeper with dark shading. Small flowers. S.	1/10	11d.
CHINA LANTERN —S. White, tube carmine. C. Carmine Orange. S.	1/10	11d.
CITATION —S. Light pink. C. White veined pink. S.	2/6	plants only
CLAIRE EVANS —S. White and shell pink. C. Light violet. D.	1/10	11d.
COLLINGWOOD —S. Pale pink. C. White. D.	2/6	1/6
CONCHILLA —S. Shell pink. C. Amethyst violet. S.D.	1/10	11d.
CRYSTAL ROSE. Traler. Double corolla pink lilac orchid form with centre petals downward, outer petals flat against bright rose sepals	3/6	plants only
DOROTHY LOUISE —S. and C. White and palest pink. D.	2/6	1/6
EASTER BONNET —S. Deep pink. C. Pink. D.	2/6	1/6
B. EBBTIDE. Corolla of light blue and phlox pink. Light pink inside, white outside	3/6	plants only

P—Plants, R.C.—Rooted Cuttings.



ONE OF OUR HOUSES CONTAINING 12,000 PLANTS IN 2½-INCH POTS READY FOR DISPATCH TO CUSTOMERS.

	P.	R.C.
FALLING STARS —S. Scarlet. C. Turkey-red. S.	1/10	11d.
FLASH —Small flowers, light magenta. S.	1/10	11d.
FLYING CLOUD —White with very faint tint of pink. D.	2/6	1/6
FORGET-ME-NOT —S. Pale pink. C. Pale blue. S.	1/10	11d.
FORT BRAGG. Sepals are a rose shade. Corolla of pale lavender rose.	3/6 plants only	
FROSTING. White sepals. Carmine corolla, a colour difficult to describe. Excellent free blooming plant	3/6 plants only	
GAY SENORITA —S. Rosy-red. C. Lilac rose. S.	1/10	11d.
B. GAY PAREE —S. White, flushed pale carmine. C. Purple and phlox pink. D.	1/10	11d.
GENI —S. Red. C. Purple. Small flowers, nice light coloured foliage	1/10	11d.
GOLDEN DAWN —S. Pale Salmon. C. Orange. S.	1/10	11d.
GOLDEN MARINKA —Sport from Marinka, with beautiful variegated foliage	2/6	1/6
GRANADA. Large double flowers of rich purple with deep carmine sepals.	3/6 plants only	
GUINEVERE —S. White. C. Orchid blue. S.D.	1/10	11d.
HAZEL MARSH. Trailer. Multiple petalled corolla of palest orchid. Pale rose tube, broad granular white sepals well reflexed, displaying the multiple petalled corolla. This lovely trailing pastel is a sport of "His Excellency," having the same vigorous but more willowy growth. HAZEL MARSH has excellent form with large flowers which do not fade. Small to medium foliage. Garden tested for three years. Originator's description	3/6 plants only	
JACK SHAHAN —Pale rose-bengal. S.	1/10	11d.
JAMBOREE —S. Pink. C. Orange. D.	3/6	2/6
JOHNNY —S. Rose, tube red. C. Blue. S.D.	1/10	11d.
KERNAN ROBSON. Large double smoky red corolla, changing to rosy red as flower matures. Pale red sepals lie flat against short pink tube	3/6 plants only	
KEYSTONE —Best described as an off white. S.	1/10	11d.
KING'S RANSOME —S. White. C. Imperial purple. D.	2/3	1/3
LA BIANCA —S. White, tipped green. C. White, flushed pink at base. S.	2/6	1/6
LACE PETTICOATS —All white double, palest pink flush inside sepals.	7/6 plants only	
B. LILIBET —S. White. C. Soft rose, flushed geranium lake. D.	1/10	11d.

P—Plants; R.C.—Rooted Cuttings.

		P.	R.C.
	LENA DALTON —S. Pink. C. Blue. D.	1/10	11d.
B.	LUCKY STRIKE —S. Palest pink. C. Flaked blue and rose. S.D.	1/10	11d.
	MARIN BELLE . Corolla of pansy violet. Salmon pink sepals turn gracefully back, covering tube	3/6 plants only	
	MARIN GLOW —S. White. C. Purple. S.	2/3	1/3
	MAZDA —S. Pale orange. C. Orange carmine. S.	2/6	1/6
	MELODY —S. Pale neyron rose. C. Pale cyclamen purple. S.	1/10	11d.
	MINUET —S. Red. C. Brilliant purple. S.	1/10	11d.
	MISSION BELLS —S. Red. C. Deep purple. S.	1/10	11d.
	MOTH BLUE —S. Red. C. Deep lilac blue. D.	1/10	11d.
	MISS VALLEJO —S. Palest pink. C. A little deeper. D.	3/6	2/6
	NEW FASCINATION —White flushed pink. S.	2/6 plants only	
	MRS. L. SWISHER —S. White. C. Flesh pink to rose. S.	1/10	11d.
	PACIFIC GROVE —S. Dark crimson. C. Bishop violet. D.	1/10	11d.
	PATTY EVANS —S. White to rose. C. White flushed pink. D.	1/10	11d.
B.	PEE WEE ROSE —S. Red. C. Rose. S.	1/10	11d.
	PEPPERMINT STICK —S. Carmine rose. C. Royal purple and carmine rose. D.	2/3	1/3
	PERIWINKLE —S. Pink. C. Lavender blue. S.	2/3	1/3
	PETITE —S. Pale rose. C. Lilac blue. D.	1/10	11d.
B.	PINK BALLOON —S. Dark red. C. Pale pink, veined pink. D.	1/10	11d.
	PINK FAIRY —S. Pale rose. C. Clear pink. D.	1/10	11d.
B.	PINK GALORE . Double long corolla of beautiful soft rose or candy pink. Long tube and upturned sepals slightly deeper pink. Foliage excellent. Dark green glossy leaves	3/6 plants only	
	PINK QUARTETTE —S. Red. C. Pale pink. S.D.	2/3	1/3
	PIO PICO —S. Pink. C. Purple. D.	1/10	11d.
	PUGET SOUND —S. Red. C. Milky white. D.	1/10	11d.
	PURPLE HEART —S. Crimson. C. Violet splashed rose. D.	1/10	11d.
	R.A.F. —S. Red. C. White flushed pink. D.	1/10	11d.
	RASPBERRY . Double raspberry rose corolla. Long pointed sepals of pinkish white	3/6 plants only	
B.	RED JACKET . Large fluffy double with the whitest corolla, bright red sepals and buds	3/6 plants only	

P—Plants; R.C.—Rooted Cuttings.

B. RED SPIDER—S. Crimson. C. Rose madder. S. 1/10 11d.

B. RED WING—S. Red. C. Plum purple. S. 1/10 11d.

REGAL—Crimson madder self 2/6 1/6

REGAL ROBE. Double corolla, deepest royal violet-purple with many of the petals scalloped, giving a "different" appearance. Tube and upturned sepals, deep bright red. Prolific bloomer, makes a rich colour contrast

3/6 plants only

ROSE PILLAR—S. Neyron-rose, tipped green. C. Rose. S. 1/10 11d.

RUBEO—S. Pale carmine. C. Rose bengal, marbled geranium lake. S.D. 1/10 11d.



WHITE BOUQUET

RUFUS THE RED—Self coloured turkey red. S. 1/10 11d.

SACRAMENTO—Light carmine self 1/10 11d.

SAN MATEO—S. Deep pink. C. Dark violet, pink splashes. D. 1/10 11d.

SANTA LUCIA—S. Red. C. Pale pink, veined cerise. D. 1/10 11d.

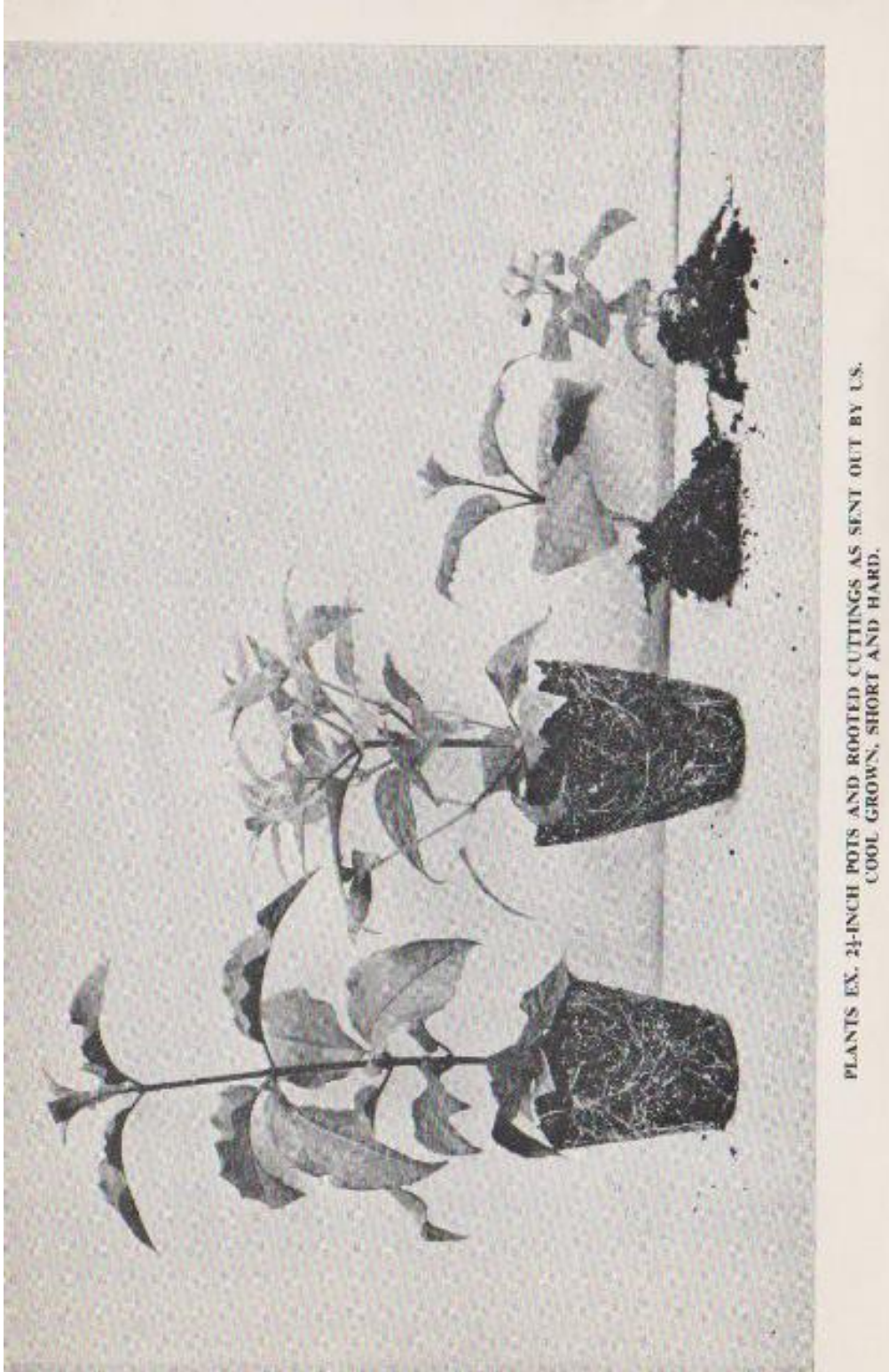
SEVENTEEN—Clear soft pink. D. 3/- plants only

B. SHADY LANE. Large double flaring corolla, with over-lapping petals of lilac blue splashed with coral pink. Sepals pink. Strong vigorous. 3/6 plants only

SNOW FLURRY—White with pink flush. D. 2/9 plants only



SUNKISSED



PLANTS EX. 24-INCH POTS AND ROOTED CUTTINGS AS SENT OUT BY U.S.
COOL GROWN, SHORT AND HARD.

	P.	R.C.
SOPHIA. —S. White and pale carmine. C. Dubonnet purple D.	1/10	11d.
SUNKISSED. —S. White. C. Light orange mottled palest pink. D.	2/6	1/6
SUNSET. —S. Salmon pink. C. Bright coral. S.	1/10	11d.
SWEET LEILANI. —S. Pale pink. C. Lilac blue. D.	3/-	2/-
SWEET SIXTEEN. —S. Rose. C. Neapolitan pink. D.	1/10	11d.
SWINGTIME. —S. Shiny red. C. Milky white. D.	2/3	1/3
TANGERINE. —S. Green flushed carmine. C. Orange to rose S.	1/10	11d.
TELEVISION. —S. Pink. C. Blue with pink markings. D.	1/10	11d.
TENNESSEE WALTZ. —S. Deep rose. C. Rose. Madder. D.	2/3	1/3
THE ARISTOCRAT. —S. palest rose. C. Creamy white, veined rose at base. D.	2/6	1/6
TINKER BELL. —Similar to 'White Spider'	1/10	11d.
TOPPER. —S. Red. C. Dark blue with white. S.D.	1/10	11d.
B. TRAIL BLAZER. —As Red Spider, but double	1/10	11d.
TREASURE. —S. Neyron rose. C. Orchid. D.	1/10	11d.
UNCLE CHARLIE. —S. Red. C. Lilac. S.D.	1/10	11d.
VIOLET GEM. —S. Carmine. C. Deep violet. S.D.	1/10	11d.



LONELY BALLERINA

VOODOO. Blood red sepals. Large deep purple corolla.

3/6 plants only

B. WALTZ TIME. Double corolla with folded petals of glowing pink, flushes slightly with pale pink at outer edges of petals. Sepals are pure white, tipped green outer side and palest flushed pink underside.

3/6 plants only

WHITE BOUQUET. Ivory white double corolla with folded scalloped petals of heavy texture, rare in a white fuchsia. Tube and broad upturned sepals are ivory white with a touch of pink at base of tube.

3/6 plants only

B. WHITE SPIDER. S. White, flushed pink. C. White. S.

1/10 11d.

ABBREVIATIONS

P.—Plants; R.C.—Rooted Cuttings.

S.—Single. D.—Double.

S.D.—Semi-Double.

B.—Basket. S.—Sepals.

C.—Corolla.

Rooted Cuttings, our selection 8d. each.



GOLDEN DAWN

TERMS OF BUSINESS

All plants sent out by us are of first class quality, grown on our own nurseries; we never buy in for re-sale. Everything is guaranteed true to name.

Rooted cuttings are sent by parcel post and we guarantee safe delivery and complete satisfaction on delivery. Plants are sent by passenger train at owners' risk rates unless we are instructed to the contrary. Every care is taken by us in packing, but we accept no responsibility for loss or damage by British Railways. Any complaint must be made on receipt of plants.

Where cash does not accompany the order a pro-forma invoice will be sent as soon as plants are ready for despatch.

It is not often that we have to substitute but at times a run on a particular variety occurs or it starts badly. The only reason we substitute is to avoid holding up your order. Where possible please state an alternative variety and if you are going to make standards specify unstopped plants. Where substitutes are not acceptable please state so.

If the customer wishes to take our selection at the lower price, we are always happy to co-operate by not duplicating any he already has in his collection.

PACKING AND CARRIAGE CHARGES

Rooted Cuttings, 2/3 on any quantity.

Plants ex. 2½ in. pots:—

Plants under 10/-. add 2/3.

Plants over 10/-. add 3/-.

CULTURAL INSTRUCTIONS

ROOTED CUTTINGS.

These should be potted into 2½-inch pots using John Innes No. 2 compost, or alternatively a mixture of the following:—3 Stacked Loam, 2 Granulated Peat, 1 Sharp Grit Sand. To every wheelbarrow full of this mixture add a five-inch potful of good general fertilizer. Special care should be given to watering until plants commence growth. If sun is strong, shade plants with tissue paper. In order to keep plant bushy, pinch out the growing tip, and also resulting four side-shoots at the second leaf. Further pinching out of shoots may be done and to time flowering allow eight weeks from last stopping. Keep plants moving by gradually potting on into a size larger pot. It is not usual to exceed a five or six inch pot the first year.

PLANTS EX. 2½-inch POTS

These should be given exactly the same treatment as for rooted cuttings, potting firstly into a 3½-inch pot.

WHERE NO GREENHOUSE IS AVAILABLE.

Use a well lighted window and give exactly the same treatment as in a greenhouse. Early June the plants may be stood out of doors or plunged in beds, but first of all stand for a few days in a shady spot to harden off.

BASKETS.

It is usual to use three plants for an average size basket. Grow plants in pots, pinching back to make them nice and bushy. Where baskets are required for outside, make up the basket a few weeks beforehand and leave hanging in the greenhouse to become well established. Varieties suitable for baskets are marked in the catalogue with a "B." We would also like to point out that varieties described as basket varieties can often be trained up a centre stake and the side shoots pinched back to a second leaf, making excellent pyramids.

STANDARDS.

These are made by growing your plant on a single stem, removing all side shoots until the desired height is reached. The tip is then pinched out and the resulting four side shoots pinched at the second leaf in order to form a head. We grow a large number of standards every year and these are available in different varieties and prices ranging from 7/6d. to 35/-. By far the best method is to have whips; these are straight stems of about 2ft. ready to form a head, and travel far better by rail. Full list of varieties and prices will be available in February for which please enclose a stamped addressed envelope.

FEEDING.

This should be done only when the pot is full of roots. Any good make of liquid feed is suitable, but we recommend John Innes Liquid Feed in crystal form. This can be supplied by us in 5/- packets, post paid.

PESTS.

Greenfly. This is easily controlled by fumigating the greenhouse every few weeks with nicotine shreds.

White Fly. Fumigate with DDT/BHC Lindane.

Red Spider Mite. The finest deterrent is clear water forcibly sprayed on the underside of the leaves.

WINTER TREATMENT.

In late Autumn when flowering finishes, encourage your plants to rest by gradually withholding water, but on no account allow them to dry out. Keep as cool as possible, but clear of frost. Plants may be started into growth early February by giving more warmth and water. Remove carefully most of the old soil from the roots and re-pot into a smaller pot and prune to shape. Procedure is then as for a young plant.

HARDINESS.

We are being continually asked if it is possible to winter out of doors the large flowered, so-called half-hardy varieties. We have numerous customers who tell us they are quite successful in doing so, and in districts where we would have thought it impossible. Our reply therefore is that it is worth trying, particularly where the site is sheltered and well drained. Endeavour to plant a good sized specimen so that a firm foothold is made before winter. A covering of peat or straw around the base gives protection during winter.

We are pleased to help with any of your queries regarding Fuchsias, but a stamped addressed envelope must be enclosed.



Customers will note that Plants are priced first and Rooted Cuttings second.

Gold Medal
FUCHSIAS by



SWING TIME

JOHN BLACKWELL

Kingsdown Nurseries

KINGSDOWN · SWINDON · WILTS.

TELEPHONE: STRATTON ST. MARGARET 2224

H. PARRIS LTD. PRINTERS
HALLOWEN · BODEN