



War Art

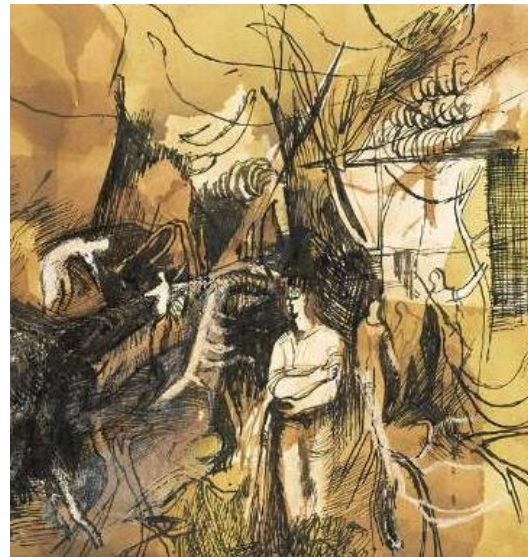


War Art is a visual account used to illustrate and record the impact of war by showing scenes, people, places and many other aspects of war through paintings, sketches and other medium.

By 1916 Britain, Australia and Canada had each established official War Art programmes to document their country's activities in the First World War and to use for propaganda. The first official War Art programme of the New Zealand Expeditionary Force (NZEF) was established in mid 1918. The New Zealand government had considered War Art as unnecessary and expensive.

The idea of the War Art schemes is to embed an artist with the military force in conflict or peace keeping missions, for the purpose of creating a personal and informed representation of that conflict.

Many countries hold collections of "War Art" composed of both official pieces that were commissioned by that country's government and unofficial art works that have been acquired by or donated to the government.



Examples of Codford War Art as shown in Codford War Art Photo Gallery

War Art relating to Codford

NEW ZEALAND WAR ARTIST – FREDERICK HERBERT CUMBERWORTH

Frederick Herbert Cumberworth, a newspaper illustrator & artist, was a Corporal in the New Zealand Expeditionary Force during World War 1. Cumberworth, service number 34569, was enlisted with the 21st Reinforcements Specialists Company, Machine-Gun Section & embarked from Wellington, New Zealand on 19th January, 1917, destination Plymouth, England. When he was convalescing in England from illness, he was contacted by the New Zealand War Records Section. Cumberworth was assigned to document the camp, surrounding village and personalities of the New Zealand Command Depot, Codford (as well as Grantham).

Some examples of Frederick Herbert Cumberworth's art work of the Codford Camp :-

- *South West View of Codford Command Depot Camp, c1918 (Watercolour)* [Archives New Zealand – The Dept of Internal Affairs Te Tari Taiwhenua – Ref: AAAC 898 NCWA 512]
- *Overlooking Hospital, Codford Command Depot, 1918 (Watercolour)*[Archives New Zealand – The Dept of Internal Affairs Te Tari Taiwhenua – Ref: AAAC 898 NWCA 510]
- *New Zealanders graves in Codford Churchyard, c 1918 (Watercolour)* [Archives New Zealand – The Dept of Internal Affairs Te Tari Taiwhenua – Ref: AAAC 898 NCWA 504]
- *Captain McPherson, Adjutant, Codford CD, 1918 (Watercolour/pencil)* [Archives New Zealand – The Dept of Internal Affairs Te Tari Taiwhenua – Ref: AAAC 898 NCWA 512]
- *Main Camp, Codford Command Depot, 1918 (Pencil)* [Archives New Zealand – The Dept of Internal Affairs Te Tari Taiwhenua – Ref: AAAC 898 NCWA 507]
- *Hospital Valley with Salvation Army, 1918 (Watercolour)* [Archives New Zealand – The Dept of Internal Affairs Te Tari Taiwhenua – Ref: AAAC 898 NCWA Q154]

Please see Codford – War Art Photo Gallery for photos of these examples.

Frederick Herbert Cumberworth was born in Rangiora, North Canterbury, New Zealand and was both a painter and cartoonist/ illustrator. He lived in Takapuna, Auckland from around 1918 to 1924 then moved to Sydney, Australia from around 1924 to 1931. Cumberworth then moved to London, England from around the years 1933 to 1935.

WAR ART BY JOHN HENRY WILLIS

John Henry Willis was born 1887 in England and died in 1989.

John Henry Willis painted an oil on canvas in 1918 titled "Kiwi Hut N.Z. Y. M. C. A. Codford Camp, Wiltshire, England. This was purchased in 1992 by Christchurch Art Gallery Te Puna O Waiwhetu.

Please see Codford – War Art Photo Gallery for a photo of this painting.

WAR ART BY JOHN KEITH VAUGHAN

John Keith Vaughan was born in 1912 and died in 1977. He was a British painter and in 1941 he was conscripted into the Non-Combatant Corps. In 1942 he was stationed at Ashton Gifford, near Codford in Wiltshire. Vaughan made several studies at Ashton Gifford depicting figures, mainly soldiers toiling and performing a series of tasks, between 1941 and 1944.

His paintings relating to Codford include:-

- *The Wall at Ashton Gifford (V)*- 1942 (Pen and ink and wash on paper)
- *Midnight, Codford* –1942 (Brown ink, wash and wax resist)

Please see Codford – War Art Photo Gallery for photos of these paintings.
