

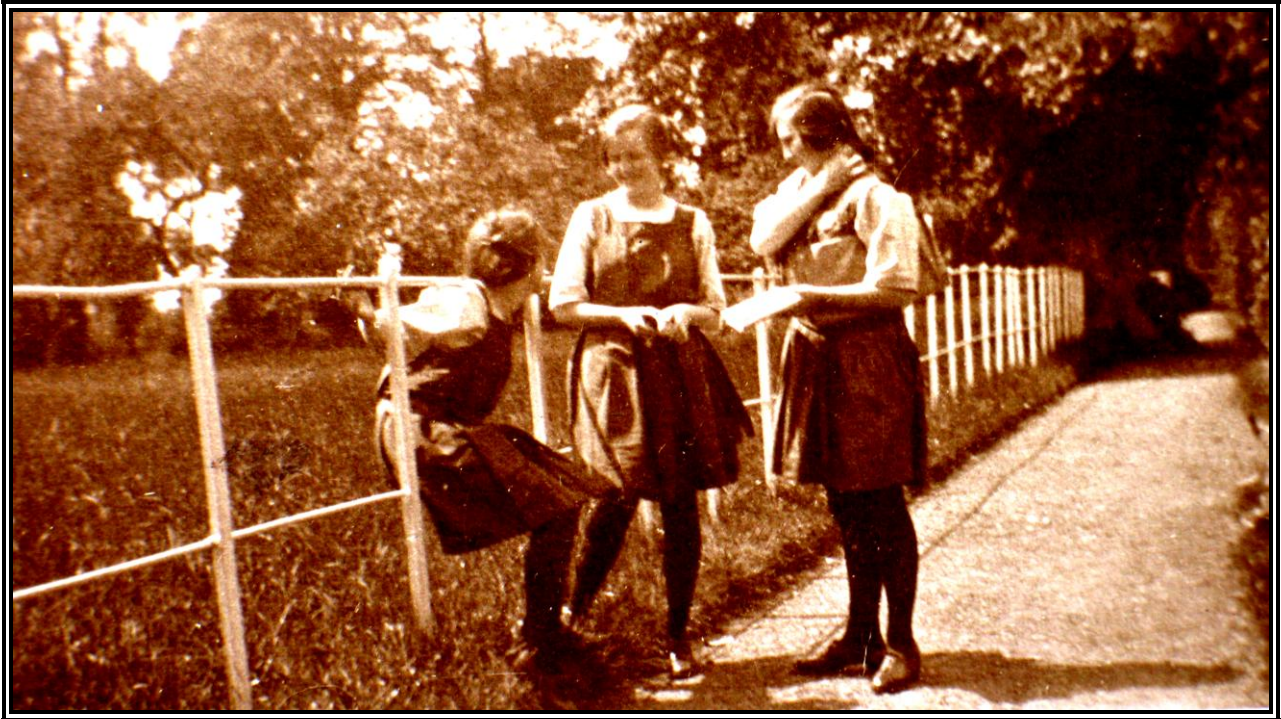
# The Moravian Girls' School 1794 – 1939



The girls outside the Dwelling House before the Tennis Court & Netball Court were built *c.* 1900 (?)



Enlarged detail. We are unable to name any of these girls from the School



Girls from the School on the path between the Burial Ground and the School House (before 1927, when the burial-ground was extended). Joan Webley is the girl in the centre.

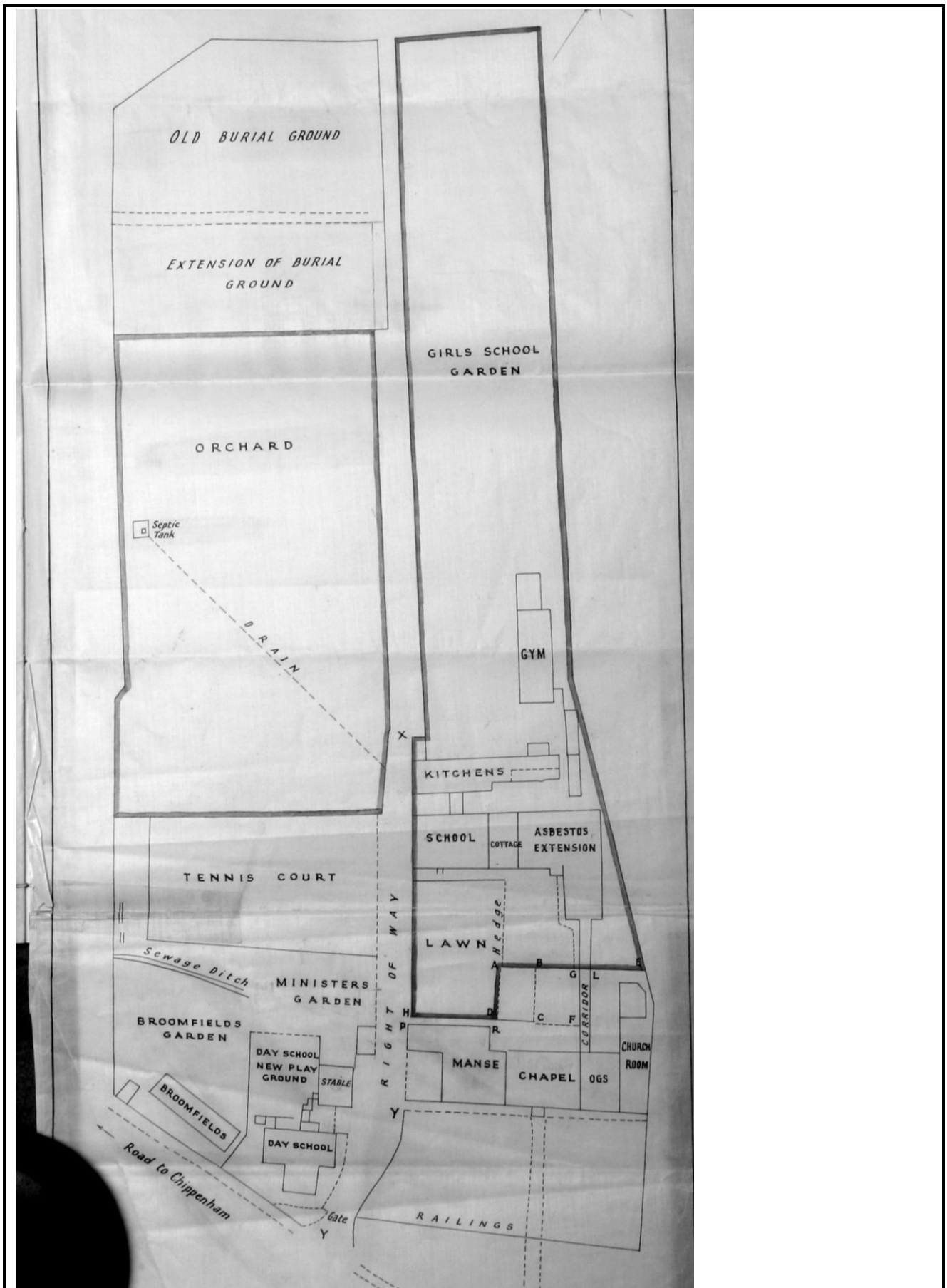


The Dwelling House of the Moravian Girls' School, before the Extension was built

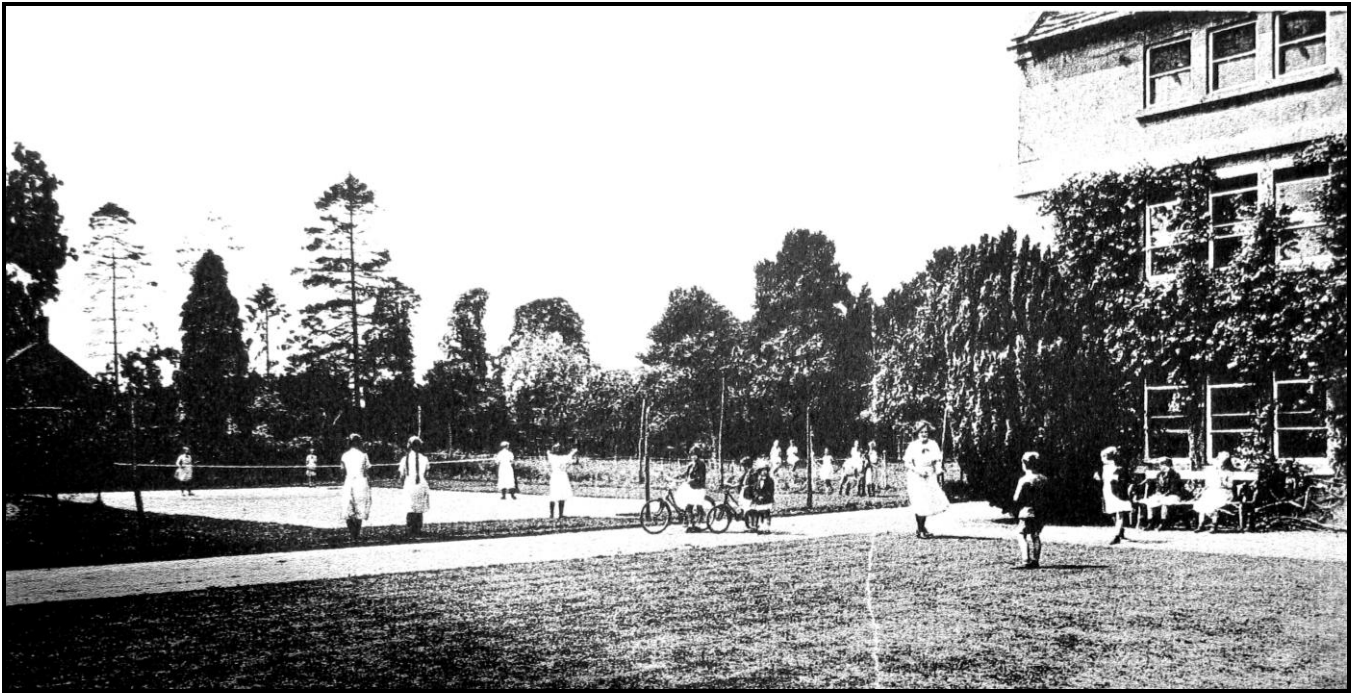
As a 1916 map does not show the extension later to be put up to the right of the small cottage (the Head's Flat), and the 1930s photographs show it, it was presumably erected in the 1920s, and was hereafter known as the New School or more prosaically, the 'asbestos extension' (as in the 1946 map, below).



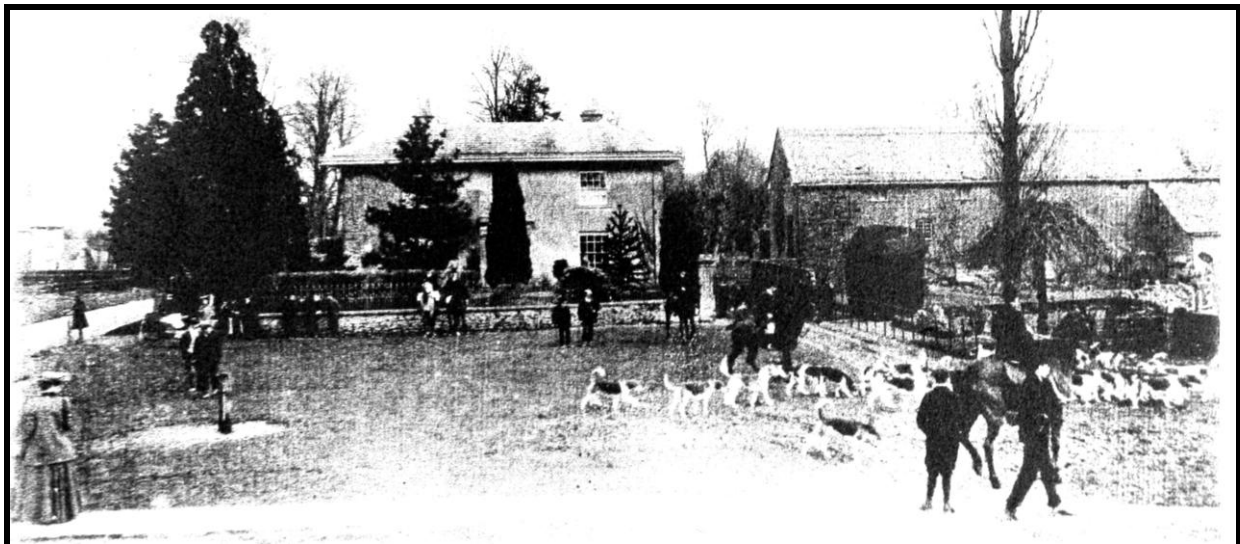
Two of the students of the Moravian Girls' School reading in the orchard with the path leading to the graveyard in the background(?) probably in the 1930s. One of these girls is Olive Gough.



Girls' School, 1946. Note the 'stable', which may be a memory of John Cennick's stable.



Part of the School Grounds



*South View House* was an ‘out-house’ of the school, and former home of the Revd. Frederic La Trobe (c. 1839-1896, and who is buried in the graveyard). This scene is from the Green or Common, perhaps around 1900. The hunt used to meet here regularly. Note the village water pump (apparently fitted with a tap) and the girl with her bicycle. In 1967 former pupil Helen (Nellie) Jefferys celebrated her 100<sup>th</sup> birthday by revisiting South View.

## The only boy in the New Moravian Village School (founded c. 1871) ...



Miss M. Jefferys with Form I. No fewer than 18 members of the Jefferys family are interred in the burial-ground – possibly more than any other family. The sole boy is Thomas Gerald Collett (1911-1982 - boys could attend to the age of nine), who later married Dinah (Phyllis) Pocock (1911- 1955, d. age 44 – buried at Tytherton). He attended the Girls' School during the war years, 1915-20 (age 4-9). The girl 2<sup>nd</sup> left may be Vera Long.



Miss Nell Jefferys at the age of 100 visits the Moravian settlement and South View, in 1967. If Nell was a pupil at the school in around 1877-1885, then South View must have been an 'out-house' of the school at this time, since she remembered being there. From L-R : Vera Long, René Hunter, Addie Weiss, Betty Warren Smith, Winnie West, Lilian Pickford, Olive Pickford, Pam Warren Smith In the Church Committee Minutes of 4<sup>th</sup> April 1927 there is a reference to Vera Mabel Long and Thomas Gerald Collett being candidates for confirmation.